

WEATHER

| | Min. | Max. | Precip. |
|--------------------|------|------|---------|
| Wednesday, July 21 | 52 | 84 | 0.00 |
| Thursday, July 22 | 50 | 86 | 0.00 |
| Friday, July 23 | 58 | 88 | 0.00 |
| Saturday, July 24 | 58 | 86 | Trace |
| Sunday, July 25 | 65 | 84 | 0.00 |
| Monday, July 26 | 60 | 78 | 0.00 |
| Tuesday, July 27 | 48 | 78 | 0.00 |

By H. K. L.

The Chelsea Standard

ONE HUNDRED-SECOND YEAR—No. 6

12 Pages This Week

CHELSEA, MICHIGAN, THURSDAY, JULY 29, 1971

15c per copy

SUBSCRIPTION: \$4.00 PER YEAR

QUOTE

"It is our true policy to steer clear of any permanent alliances with any portion of the foreign world."

—George Washington
Farewell Address, Sept. 17, 1796

Five Days Planned For Fair

The Chelsea Community Fair will last five big days again this year, running from Tuesday, Aug. 24 through Saturday, Aug. 28.

Those wishing to enter the fair may pick up entry blanks at Farmer's Supply, the Chelsea Bank, Chelsea Drug, and Foster's Men's Wear in Chelsea. Entry blanks will also be available at Hackney Hardware in Dexter.

According to parade committee chairman Jim Gaken, floats may be entered right up until the time of the parade. Anyone wanting to enter a float should contact David Longworth at Longworth Plating, 475-3972.

Anyone entering a float in the parade is entitled to a queen candidate, but the deadline for queen contest entries will be Aug. 14, according to Mrs. David Rowe, chairman of the queen committee. Mrs. Rowe said that all those wishing to enter the competition should contact her at 475-8065 before Aug. 14.

The complete schedule for the fair has not yet been established, Allen Broesamle, president of the Fair, noted. (The next fair board meeting will be held Aug. 4.)

County 4-H Fair Begins Next Tuesday

An estimated 1,400 to 1,500 Washtenaw county 4-H club members are busy getting ready for the fair beginning Tuesday, Aug. 3 at the Rural Activities Center on Saline-Ann Arbor Rd.

Duncan Sanford, county 4-H agent reports that about 3,000 entries have been received for this year's event which promises to be bigger and better than ever.

Members of the area 4-H groups will be showing livestock, crafts, sewing, gardening and other projects.

Things get underway Tuesday through Saturday at 8 a.m. with judging of exhibits and special events. Admission is free to the 4-H Fair. Closing is about 10 p.m. each day.

On Tuesday evening at 7:30 p.m., two bands will be playing on the Fairgrounds. At 6:30 p.m. on Wednesday, Aug. 4, there will be a performance by the Ypsilanti Summer Dance Group sponsored by the County 4-H.

Thursday morning at 9 a.m. there will be a horse fun show with barrel races, and a mystery class, and field trips. On Friday there will be mainly showmanship judging along with two field trips for 4-H'ers. Thursday's groups will go to the U. of M. Phoenix Laboratory, U-M Gas Dynamics Lab. and the U-M Naval Architecture Laboratory.

On Friday the 4-H groups will go to the Exhibits Museum, Palmetum and Art Museum at U-M.

At 7 p.m. on Wednesday evening teen-agers will have an opportunity to rap with elected officials on the state, county and local level.

Win Honors in Black & White District Show

Local dairymen captured honors during the District II Holstein Show held July 21 at the Rural Activities Center on Saline-Ann Arbor Rd.

There were 34 classes and 138 animals entered in the show hosted by the Washington-Wayne Holstein Association.

Carl Macomber of Manchester was chairman of the show. Ken Mattson of Lapeer was the judge. Macomber had the grand champion bull in the senior yearling class, while Leonard Burmeister of Saline had the reserve grand champion bull in the same class.

Macomber was also first in the bull calf class, and Harry Macomber was second in the junior yearling bull division.

Ernest Pichan of Howell placed first in the senior yearling bull class.

Burmeister was first in the junior yearling division and George Macomber placed second. Pichan took second in the two-year-old cow class.

George Macomber of Manchester placed first in the senior heifer calf competition, and Jim Burmeister of Saline won second in the same class. Carl Macomber was first in the junior yearling heifer division and George Macomber placed second. Pichan took second in the two-year-old cow class.

Carl Macomber had the best three cows, while George Macomber placed first for having the best produce of dam and first for having the best daughter of dam. George Macomber also placed second in the dairy herd group.

Winners will next compete in the State Black and White Show to be held July 30 on the Marshall fairgrounds.

Baseball Team Wins Over Dexter, 6-2

Chelsea defeated their Dexter rivals by a score of 6 to 2 Tuesday evening.

Chelsea got off to a one-run lead in the first inning on a walk to Todd Sprague, and a double by Wayne Welton.

Chelsea picked up two more in the third inning on a single, three walks, and a sacrifice by Joe Aspranti. Also in the third, Jim Wojcicki surprised the fans by stealing home.

Dexter picked up their two runs in the bottom of the third on a walk, a single and an error.

Chelsea got three more runs in the fourth to clinch the win.

Pitching for Dexter was Thurlow Raymont. Chris Wall caught. Wayne Welton pitched for Chelsea and Randy Brier caught.

The Bulldogs got their six runs on only four hits, but they had 10 walks, and eight stolen bases.

Fine hitting performances were given again by Jim Wojcicki, Wayne Welton and Randy Brier.

Line Score: R H E
Chelsea 6 4 1
Dexter 2 4 1

The Bulldogs' next game will be 8 p.m. Thursday, July 29, (tonight) at Vets Field No. 5 against Stein & Goetz.

(Other baseball results may be found on page 12.)

Douglas A. Collyer Promoted To Rank of Major in Army

Douglas C. Collyer, son of Mr. and Mrs. Clinton Collyer of Canaan Lake, was promoted to the rank of Major in the United States Army on May 13.

At the promotion ceremony held by the 2nd Armored Division, Ft. Hood, Tex., Major Collyer received his rank insignia from General James Grimley and his wife, Mrs. Nadia Collyer.

Major Collyer is currently the Deputy Adjutant General, 2nd Armored Division and responsible for the personnel management of 14,000 officers and men of the Division, the Division Administrative practice and procedures, the Division recruiting and re-enlistment programs. He is also responsible for the 350 officers and men of the office.

After graduating from Chelsea High school in 1958, Major Collyer attended Central Michigan University and received a BS degree in business administration in 1963.

Collyer's 7½-year military career has encompassed tours of duty at Fort Irwin, Calif., NATO in Paris, France and Brussels, Belgium, Military Assistance Command, Vietnam and currently with 2nd Armored Division, Fort Hood, Tex.

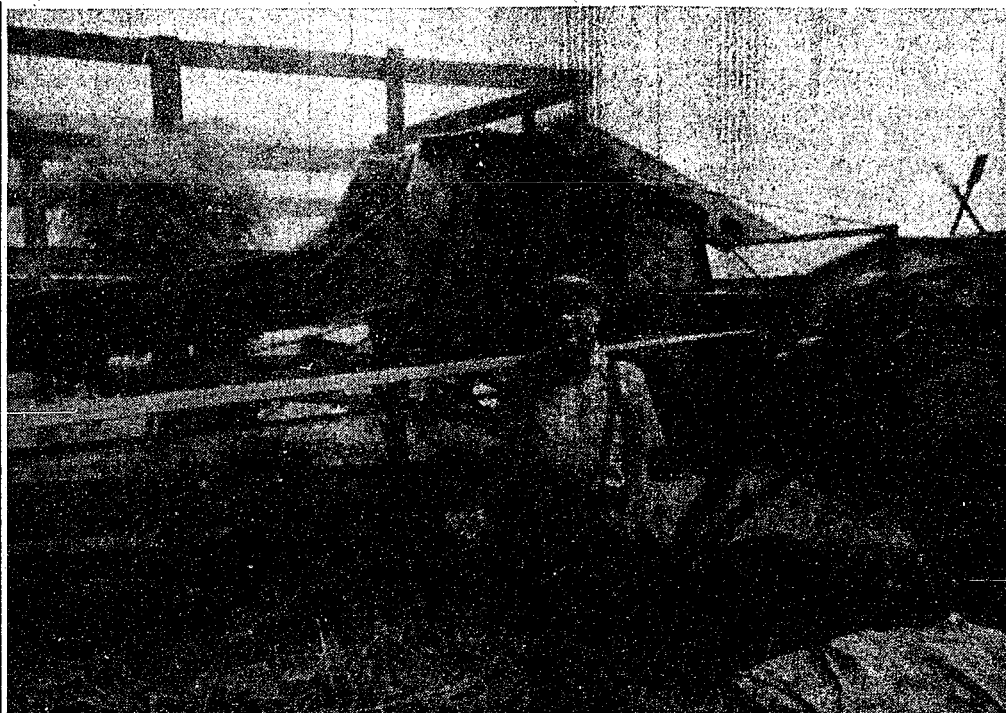
Major Collyer and his wife, Nadia, spent a month with his parents before returning to his new assignment.



MAJOR DOUGLAS COLLYER

Jaycee Steak Fry For Membership Slated Tuesday

Chelsea Jaycees will hold their annual steak fry for members on Tuesday, Aug. 3 at Island Lake. The Jaycees will be host to many state officers, including Jaycee president Pat Sheridan, internal vice-president Don Wadell and external vice-president Bill Dyke. Co-chairmen for the event are Art Steinaway and Bud Ringe.



KEEPING AN EYE on things was Cortez Bogel, owner of the farm at the corner of Grass Lake and Sharon Hollow Rd., where an old-time threshing party was held last Saturday. Behind him are the basket racks used to haul the shocks, and the separator which separates the grain from the straw. An old rule of thumb says that 12 shocks of 12 bundles will yield a bushel of grain.



SHOUTING OVER THE NOISE made by Chuck Curtis' 1928 John Deere tractor are Curtis (left) and Donald Irwin, (right), organizer of the Chelsea area since the 1930's, has worked the Sharon Hollow Rd. farm where the party was held since 1938. Looking over the proceedings, too, were Irwin's grandsons Matt and John DeCoster.



OLD TIMES WERE REMEMBERED by folks like Chuck Curtis and Carol Ordway. Ordway recalled threshing in that field 50 years ago. Mr. and Mrs. Irwin Weiss, who have been married for 60 years this fall, and Albert Herman look toward the field where the threshing was going on.

Old Fashioned Threshers Recall How It Used To Be

It had threatened rain all morning, but by 1 p.m. the air was merely hot and heavy, and an angry red sun burned through the high gray clouds. Dust, wheat heads and noise hung over the field and drifted down the gravel road. The people came from miles around, from Jackson, Howell and Ypsilanti, as well as places closer by.

It was the first annual old-time threshing party, organized by Donald Irwin, held at the corner of Grass Lake and Sharon Hollow Rds., Saturday, July 24.

Irwin and a small army of his friends got together to provide the show—the threshing of eight acres of wheat, using farm equipment made in the early '30's and before. David Curtis provided the old-fashioned separator, and Chuck Curtis the 1928 John Deere tractor used to power it.

During the days before the threshing, Irwin, his hired help, and L. Dean and Billy Sotd had stacked up 225 shocks of wheat (12 bundles to the shock), after Irwin harvested the field using his 40-year-old binder.

Saturday, things got under way around 1 p.m. as the Curtis brothers, Irwin, Carol Ordway, Bob Swanberg, Willard and Walter Blumenauer and about 20 others started pitching the bundles off the racks into the separator. The work, and the refreshments, were finished around 7 p.m. when the last bale of straw was loaded onto a wagon.

More than 150 people, many of them real old-timers themselves, dropped by the field during the afternoon to watch and to remember or to hear about the way it used to be. Some, like Carol Ordway, recalled working there 50 years ago, when horses and steam engines were still a part of the everyday scene.

Irwin had been unsuccessful in his attempts to get such an old steam engine for the threshing, but promises that there will be one on hand next year. He hopes, too, to find some of the old-fashioned racks used for such work before combines made threshing a one-step affair.

The farm on which the threshing took place is owned by Cortez Bogel of Detroit, but has been worked for 38 years by Irwin.

MCRR Mails Report Against Park Plans To County Officials

Drag Club Enjoys Picnic At Portage

Palmer Drag Club members "had a ball" at their club picnic held Sunday, July 25, at Portage Lake. There was a near disaster when one of the barbecue pits got too hot, but with the help of all 24 members present, the chicken was saved.

Food for the picnic was prepared by Marie Smith, Jane Calison and Kate Elisor. Highlighting the menu was a cake, baked by Marie Smith, decorated with a frosting replica of the drag strip.

Also on the menu were potato salad, cole slaw, baked beans, deviled eggs and barbecued chicken.

Two members brought boats and gave boat rides. Members also went water skiing and swimming.

Katy Snyder lost her wedding and engagement rings while swimming, but the diamond was rescued by her husband, Bill.

Activities coming up for the club are the Chelsea Fair in August and a road rally to be held in September. The club plans to use the money raised at the rally to hold a pizza party and dance for the members.

Thief Breaks in Chelsea Lanes

A breaking and entering of Chelsea Lanes, 1180 M-52, occurred Thursday, July 22 between 2:50 and 3:25 a.m.

An unknown person or persons pried open a sliding window to enter the building and took approximately \$90 in dimes and quarters from five vending machines on the premises.

The thief then left through the front door, triggering the burglar alarm and alerting Chelsea police.

Police obtained fingerprints left at the scene of the crime. The investigation is continuing.

Section of M-52 Near Manchester To Be Resurfaced

Three miles of M-52 extending North from Auburn St. in Manchester almost to Pleasant Lake Rd., will be resurfaced this November, according to the Michigan State Highway Commission.

The lowest bid on the work, \$167,580, was submitted by Thompson-McCully Corp. of Ann Arbor.

A mailing containing summaries of findings by the Mill Creek Research Council in opposition to the proposed Mill Creek Metropolitan Park has been sent to county officials, the Huron Clinton Metropolitan Authority board of commissioners and others, as the time for a recommendation for or against the park by the County Board of Commissioners draws near.

Sent to all 20 township supervisors and clerks, Ann Arbor, Ypsilanti and Saline city councils, the Washtenaw County Planning Commissioners, the Washtenaw County Board of Commissioners and other interested parties last week, the report stresses the reasons why the Mill Creek Research Council believes some other site for such a Metropolitan park must be found.

The research council has based their opposition to the park on four major points. It maintains that the farm land which the park land than as recreation land. The would use has more value as farm council, and the Chelsea School District are concerned about the loss of tax revenues if the land becomes part of the park and therefore non-taxable.

The council argues that potential problems with upstream drainage, management of the impoundment, and downstream water quantity and quality have not been investigated, and that the impact of the logistical problems of park use by large numbers of people have not yet been discussed.

A letter included in the mailing concludes:

"We believe that somehow on over 30,000 acres of publicly

owned land west, northwest, north and northeast of Chelsea the facilities proposed for a Mill Creek Park could be developed.

"If HCMA can revive and manage an urban park on Belle Isle even though they profess to be only regional park builders, and the State Department of Natural Resources can develop a regional day use park at Maybury Sanitarium even though they profess to build only rustic state parks, surely their combined talents could come up with facilities similar to those proposed for Mill Creek somewhere in the largest acreage of state-owned recreation land in Michigan's lower peninsula . . .

"Until the WCMPC staff makes the effort to consider alternative concepts we will never accept the fact that good farm land must be destroyed to provide recreation when so much public land is available."

At the time it was contacted by The Chelsea Standard, the Washtenaw County Planning Commission had not yet received the Mill Creek Research Council's summary report, and so could not comment on it.

Ed Lamoges, planning assistant, noted that the commission was still waiting for the engineering report to be made by Prof. Ernest Brater on the effects an impoundment at the proposed park site would have on the upstream and downstream areas, and that the Mill Creek Metropolitan Park would most probably not be discussed at the Aug. 4 meeting of the County Board of Commissioners. He added, however, that the agenda for the meeting had not yet been set.

Kiwanians Hear of Efforts To Clean Up Auto Exhaust

Auto Exhaust Emission Control was the topic discussed at the Monday evening Kiwanis Club meeting. Speaking to a group of 35 members was Paul A. Rutt of Walker Manufacturing Company's research and development division. Rutt compared the old exhaust manifold systems with today's more sophisticated systems, and then went on to say that the systems which must be developed within the next three years will have to surpass any developed thus far. The new systems will have to be capable of eliminating hydrocarbons, carbon monoxide and, most importantly, noise.

The speaker, who was introduced by Louis Burghardt, also said that the use of lead-free fuels should play a significant role in prolonging the life of metals used in the exhaust systems.

Kiwanians will next meet for a picnic supper Aug. 2 at the Methodist Home. That evening entertainment will be provided by a musical group headed by Bruce Galbraith.



PAUL A. RUTT

Russell McLaughlin is hospitalized at Mercy Hospital in Grayling, 49738. He has had a heart attack and will be in the hospital for a month. He would like cards from friends in Chelsea.



GETTING A HEAD START in learning about the newspaper business were these pre-school children participating in the summer Headstart program. Accompanying the children on their tour of The Chelsea Standard July 23 were Headstart teacher Mrs. Vivian Michelson and Headstart family co-ordinator Mrs. Judy Koch. A total of 28

children toured The Standard, many of them finding the camera one of the more fascinating machines used to produce the paper. The group has also toured the Jiffy Market, the police and fire stations, and Shepherd's farm. Coming up: a trip to the Lansing Zoo and a nature walk.



Washington Report by Congressman MARVIN L. ESCH

As we move from a wartime economy to a peacetime economy the continued unemployment of a great number of our highly skilled scientists, engineers, and technicians remains one of this country's national domestic problems. As a member of the Science Research and Development Subcommittee in the U.S. House of Representatives I am keenly aware of this issue.

My committee is currently exploring new initiatives to relocate and retrain the jobless scientist. Several steps have already been taken. The Labor Department has a \$5.1 million program that will train nearly 4,000 persons, most of them Californians for a wide variety of occupations that include technical marketing and bio-medical and environmental engineering.

In addition to several specific retraining programs, Labor's efforts include providing placement services with 36 workshops in various cities now underway for displaced aerospace and defense personnel professionals. Those who have lost federal positions are afforded assistance through the Civil Service Commission's referral system that gives them first preference for an opening in a government agency. Chairman of the Service Commission has reported over 5,000 displaced employees registered for this priority referral.

Grim as the situation appears to be as we make the transition from non-inflation and a high defense budget to full employment and increased output devoted to meet our civilian needs, it could brighten rapidly with an effective response.

I introduced major revisions in our manpower training programs in both the 91st and 92nd Congresses. As yet Congress has refused to act. It is absolutely clear that if we are going to once and for all retrain and assist those with expert talents and highly skilled abilities and help them in obtaining suitable employment then we must find a final solution to the hodge-podge of manpower training programs. Additionally, in the last two Congresses, I have introduced legislation to create a national economic conversion commission which would make plans for the conversion of defense industries to non-defense purposes. My committee is currently studying that bill.

The government is often criticized for being unresponsive. If Congress moves now and passes this legislation to develop and retrain our scientific manpower we will be making an important beginning in restoring the confidence of people who are in need. Massive unemployment within the ranks of our technical expert personnel is intolerable.

Uncle Lew from Lima Says:

DEAR MISTER EDITOR:

Pretty soon, allowed Ed Doolittle at the country store Saturday night, we'll be reclaiming all our garbage and trash, buying everything with credit cards and getting trading stamps in the deal, and the hole cycle of life will be repeating itself and nobody will know why. Ed was reporting to the fellers on this study he had saw about the ways waste mater-

ial is being reused these days.

First off, says Ed, he was happy to announce that old newspapers can live again as feed for stock. A Maryland agriculture research center has found that you can grind up papers, mix in molasses and other stuff and feed it to cows. The cow eats the news, and folks that make the news eat the cows and the green grass grows round and round, was Ed's words.

Clem Webster took note that the Food and Drug Administration probably will find something wrong with this deal, special with feeding cows, some of the news that the Government finds hard to digest. Clem was talking about that top secret report The New York Times got a copy of and printed that told how we got trapped in Vietnam. The food and drug people far shore would find that cows fed on them issues of The Times would give milk and meat unfit for human use, Clem allowed.

But keeping on with his report, Ed said scientists is learning to recycle garbage in a lot of ways. Cans and bottles is being used to pave roads in Japan now, and work is being done to make "glassphalt" roads here. Ed allowed if we can get all the beer cans and soda pop bottles off the shoulder and into the pavement, we'll have enough road building material from now on.

New ways is being learned to get rid of waste and get a bonus for our effort, Ed said. For instance, he said Palo Alto, California already is burning garbage in a new furnace, catching gas from the burning and using it to generate electricity. Furthermore, the city can burn the garbage for \$1 a ton, figuring the sale of the extra electricity.

In other cases, said Ed, glass and paper is being collected and turned into new glass and paper. And some plastic bottles is being made that will dissolve when they are thrown away, and some others can be burned easy.

Ed had some good news about clean air and water, but he said reports in this area was mixed. For instance, one scientist said they is as much oxygen in the air now as ever, but on the other hand he had saw this headline in a piece about air pollution, "He shot a arrow into the air, and it stuck."

But one of life's little mysteries, Mister Editor, still is who pays for trading stamps. Ed had this clipping that reported the Bureau of Labor Statistics says trading stamps don't make no difference in prices. Maybe they just happen, like ants at a picnic.

Yours truly,
Uncle Lew.



★ MICHIGAN MIRROR ★

By Elmer E. White, Secretary, Michigan Press Association

Housing Progress Made

A most significant area of government endeavor in recent years is housing.

The subject has received few headlines except for instances when it is mixed in with other controversial topics.

The reason may be that housing itself is a rather unglamorous subject and deals mainly with statistics and blueprints—things that cannot be easily dramatized into flashy pictures or big headlines.

It should be noted, however, that the state of Michigan is doing some significant things in an effort to make sure every resident of the state has a decent roof over his or her head.

One of the best examples of this came recently when the Michigan State Housing Development Authority made Michigan the first state to issue long-term revenue bonds to finance home ownership for low and moderate income families.

The Authority issued a total of \$40 million worth of bonds—\$25 million in 30-year bonds and \$15 million in 40-year bonds.

The \$15 million will be used to help finance the Authority's new home ownership program, while the \$25 million will be used to retire short-term notes issued earlier by the Authority to finance rental and cooperative housing.

The home ownership program is expected to result in the construction of at least 3,000 single family homes this year. Homes financed by the Authority are for families with low and moderate incomes.

Moderate income families benefit by paying lower interest because the Authority can get much cheaper rates on a \$15 million

bond issue than the home owner can get on a mortgage. Individuals can finance their homes through the Authority and realize a savings. They still pay all the principal on the mortgage and all operating expenses of the home.

Low income families can sometimes receive federal assistance which reduces their interest rate to 1 percent. They also must still pay the principal on the mortgage, plus operating expenses.

The interest rates on the bonds issued recently averaged 6.93 percent.

Gov. William G. Milliken hopes the program will help fill the gap between federal public housing and homes that can be purchased on the open market.

"About 70 percent of Michigan's households are effectively priced out of existing new and used housing markets," he says. "Substantial numbers of people are denied any real opportunity to improve their living standard, regardless of their ambition or diligence."

Bikes are Cycles

Michiganians who joined the growing number of mini-bike owners received a reminder from Secretary of State Richard Austin not to take that bike onto public streets improperly.

Austin says before a mini-bike may be driven on a street or highway it must include all equipment motorcycles have, including headlights, rear lamps, rear view mirror and the like. It also must be registered with his office.

And it may only be driven by a licensed driver who is wearing a helmet.

Austin says that if the tiny vehicles are taken onto public

roads, the driver should "exercise extreme caution and stay away from busy streets and thoroughfares."

What? No Finals?

Today's college student undoubtedly has a more complicated world to learn about than his parents and there are also undoubted pressures on him from all sorts of places.

But there is at least one area where he's starting to have it softer. Michigan State University recently announced it has eliminated the compulsory final exam.

The Academic Council, composed of both faculty and students, recently approved a recommendation that said "institution settings occur in which a final examination may not be necessary or desirable."

Shucks, a lot of students have known that for years.

The proposal recommended that the two-hour period designated for finals be used for "examination,

JUST REMINISCING

Items Taken from the Files of The Chelsea Standard

4 Years Ago . . .

Thursday, Aug. 3, 1967—

The Rev. William D. Ladku, has been appointed to serve as vicar of St. Barnabas Episcopal church, and as rector of St. James Episcopal church in Dexter. The new rector and his wife are both natives of Alpena. He has a BA and MA in Philosophy, from the University of Michigan, and spent three years at Seabury-Western Episcopal Seminary in Evanston, Ill. In addition, he holds an MA in American History, also from the University of Michigan.

Japico Koenigter, daughter of Mr. and Mrs. Karl Koenigter, 630 Flanders St., was one of six outstanding freshmen at Eastern Michigan University who were honored at a luncheon at the McKenny Union Wednesday, July 26. Janice and five other freshmen chosen, are recipients of the first President's Scholarships awarded by the university.

At a regular monthly meeting, July 25, the Trail Blazers Riding Club, Inc., elected officers for 1968 and was presented with an American flag by the Veterans of Foreign Wars Auxiliary. The flag was presented by the VFW Auxiliary president, Mrs. Kenneth Platt to Tom Franklin, newly elected vice-president who accepted the flag for the Trail Blazers. Participating in the ceremony were Mrs. Fred Klink, VFW community service chairman, Pam Schultz, Trail Blazers Junior president, Mr. Mac Packard, VFW Americanism chairman, W. W. Williamson, Trail Blazers president, and Mrs. Richard Kern, VFW patriotic chairman, in addition to Mrs. Platt and Franklin.

Preparing for sheep judging at the 4-H County Show held at the Rural Activities Center on the Ann Arbor-Saline Rd., this past week were local 4-Hers Tom McKernan and Larry Doll. They were "advised" and assisted by Chris Doll, Jeanne Hinderer and Jill Lantis.

The Rev. David A. Wood, former pastor of Chelsea Baptist church is returning to the village this

discussion, summarizing the course, obtaining student evaluation of the course, instruction, or any other appropriate activity designed to advance the student's education.

Today's student has it tough in some respects. But how can he expect much sympathy from his elders if he never has to stumble into a final bleary-eyed from too much coffee and a lack of sleep caused by trying to cram a whole term's work into one night?

14 Years Ago . . .

Thursday, July 24, 1957—

Nancy R. Atkinson, daughter of Mr. and Mrs. George W. Atkinson, of 333 Madison St., as one of approximately 300 students at Michigan State University who have been designated Honors College scholars, according to an announcement from the University. The new Honors College for outstanding students goes into operation with the opening of fall term in September.

The Junior and Senior Bands will present the second summer concert on the high school lawn Friday. Donna Walz, Robert Balmer, and Bryon Pearson will be featured in a cornet trio, and baton twirlers Delores Schmitz and Matthew Brown will perform. Virginia Miller will announce the Senior band's portion of the program, while Donald Wilson will act as announcer for the Junior Band program.

Try-outs were held this week for chair positions in both Beginning and Junior Bands. Tom Johnson, cornetist; Linda Wahl, clarinetist; Cindy Schumm, flutist; Roy Lange, saxophonist; and Gary Moore, drummer; were first chair winners in Beginning band try-outs. Rayma Smith, flutist, and Judy Grove, clarinetist, are now first chairs of their sections as a result of Junior Band try-outs. Marvin Fischer, Quentin Smith, and Donald Brooks are all tied at 38 seconds in tone holding. Gayle Grove is director of the bands.

Elmer Bristle & Sons, 13271 Scio Church Rd., have been named to membership in the American Milk Shorthorn Society. Also announced was the naming of Jerry Bristle to junior membership.

24 Years Ago . . .

Thursday, July 31, 1947—

Chelsea Girl Scouts who attended Camp Cedar Lake's third session July 16-23 were Sandra Baldwin, Janice Wheeler, Janet Talbot, and Mary Ellen Moore.

Mr. and Mrs. Perry D. Noah of North Lake, who were married Aug. 4, 1892 in the home where they are still living, and where Mrs. Noah was born, plan to celebrate their 55th wedding anniversary

Sunday, Aug. 3. A family dinner will mark the occasion.

Mrs. Robert Leach discovered that one of her potato vines has what appear to be four small green tomatoes growing on one of the clusters of potato blooms, she reported this week. She made the discovery Monday morning, while working in her potato patch. The incident brings to mind the story told by radio comedians about planting onions with potatoes to make the potatoes' eyes water and thus irrigate the ground.

Family reunions of four local families were held during this past week. The 1947 Luckhard family reunion was held Sunday at the home of Mr. and Mrs. Clarence Trinkle, while the Brown family gathered at the home of Mr. and Mrs. Stanley Vickers at East Lansing. Those from Chelsea who attended the reunion were Mr. and Mrs. Charles McDaniels, and son, Eddie, and Mr. and Mrs. Lionel Vickers, and daughter Doris. About 50 members of the Bahnmiller family gathered at Dexter-Huron county park. Chelsea people were Mr. and Mrs. Elmer Weinberg, Mr. and Mrs. Elden Weinberg, son, Hugh, and Fred Loeffler. Four generations of the Hudson family, original members of which were formerly North Lake pioneer residents, met at Potter Park, Lansing for their annual reunion.

34 Years Ago . . .

Thursday, July 29, 1937—

At the organization meeting of the Board of Education, School District No. 3, Fr., Sylvan and Lima, held last Thursday evening, officers were named for the following year. They are O. D. Schneider, president, G. W. Walworth, secretary, J. N. Streiter, treasurer, and J. V. Burg, and M. J. Dunkel, trustees.

Wheat threshing commenced in the vicinity of Chelsea the past week. The grain in the majority of cases is of rather poor quality, rusty and it shrinks. The yield varies according to the location, and it runs from 20 to 25 bushels to the acre.

Three family reunions were held this past Sunday. The annual Kaercher reunion which was to have been held Sunday at the Dexter-Huron park, adjourned to the home of Mrs. L. Kaercher, because of rain, where dinner was served to 41 family members. Forty-five representatives of the Parker family attended their annual reunion at the home of Mr. and Mrs. E. J. Parker in Lima township. Edward J. Parker was elected president of the group, while Miss Grace Parker is secretary-treasurer. Mrs. E. J. Parker was chosen chairman of the table committee.

Michigan Bell Report to Customers

A clarification of facts concerning your telephone service and usage

IF YOUR ROOF IS HURTIN' Call Burton!

- ★ Old and New Roofs
- ★ Hot Tar and Metal Roofs
- ★ Aluminum Siding
- ★ Aluminum Awning and Storm Doors and Windows
- ★ Seamless Aluminum Eaves Troughs and Down Spouts
- ★ Mobile Home or Trailer Skirting

COOPERATIVE ROOFING & SIDING CO.

Call 662-5900 or 662-3288

Evenings Call Burton Rathburn, 663-0754

NOTICE OF HEARING OF TOWNSHIP OF DEXTER ZONING BOARD OF APPEALS

Please take notice that the Township of Dexter Zoning Board of Appeals will hold a public hearing on Wednesday, August 4, 1971 at 7:30 p.m. in the Dexter Township Hall on the Petition of The Detroit Edison Company to commence grading and construction under its Conditional Use Permit after filing of a surety bond with the Township of Dexter.

TOWNSHIP OF DEXTER Zoning Board of Appeals

EARL DOLETZKY, CHAIRMAN

Fixed-and low-income families can save on their telephone bills.

Actually, almost any family can reduce its telephone bill . . . by first understanding that increased bills come largely from increased telephone usage (not increased rates). Your present telephone rate structure is based on the idea that you pay for what you use. We think that's only fair. Now, if your family doesn't need to use your telephone too frequently, there is a money-saving plan that may be right for you:

Measured Budget Service for \$3 a month . . . available statewide. Michigan Bell's two-party line Budget Service is not best for everyone, but can be just the thing for retirees or, perhaps, singles with minimal telephone needs. Because, you pay just \$3 a month, if you stay within the monthly calling allowance on

local and interzone calls. Also, in most areas a one-party line Budget Service is available at \$4.50 a month.

Talk for a minute, pay for a minute, not three. Another way to save . . . with Michigan Bell's "pay for what you use" plan, you are no longer automatically charged for three minutes on long distance calls within Michigan. In other words, if you make a brief long distance call, you pay only for what you use. If you talk for one or two minutes, that's all you pay for. Plus, by dialing direct you can save 20% or 40% on long distance calls within Michigan.

For more information on economic use of your telephone, call your Michigan Bell Business Office. We want to help.



Michigan Bell

Established 1871 The Chelsea Standard Telephone GR 5-3581

Excellence Award By Michigan Press Association
1951-1952-1953-1954-1955-1956

Walter P. Leonard, Editor and Publisher

Published every Thursday morning at 300 North Main Street, Chelsea, Mich. 48118, and second class postage paid at Chelsea, Mich., under the Act of March 3, 1879.

ADDRESS CORRECTION REQUESTED

Subscription Rates (Payable in Advance)

| In Michigan: | | Outside Michigan: | |
|---|--------|-------------------|--------|
| One Year | \$4.00 | One Year | \$6.00 |
| Six Months | \$2.25 | Six Months | \$3.50 |
| Single Copies | \$.15 | Single Copies | \$.20 |
| Service men or women, anywhere, 1 year \$4.00 | | | |

MEMBER
NATIONAL NEWSPAPER
National Advertising Representative
MICHIGAN NEWSPAPERS, INC.
267 Michigan Ave.
East Lansing, Mich. 48823



A BLOOMIN' JOKE, that's what it was. Mr. and Mrs. Thomas Clough, 19920 Bartell Rd., Gregory, had taken their pick-up into Spaulding Chevrolet Friday for repairs. When they got it back

they found it had, indeed, been all fixed up by the mechanics there who found the front tire a perfect place for planting petunias. In this case, adding flower power to horsepower makes sense.



AN EARLY MORNING FIRE completely destroyed the home of Mr. and Mrs. Thomas C. Clough, 19920 Bartell Rd., Gregory, Monday, July 26. The Gregory Fire Department was sent to the home at approximately 2 a.m. when a passer-by noticed the blaze. The Cloughs were away for the

week-end on a camping trip. Fifteen men and three trucks battled the fire for more than two hours, but according to one Gregory fireman, the house had been beyond saving by the time they got there. "The house was gone," he said. "The electric wires were already down."

Two Die in Scio Township Auto Crash

Two people were dead following a crash caused when the speeding car in which they were riding went out of control on M-14 near Wagner Rd., in Scio township at approximately 8 p.m. Sunday.

The car, driven by Ronnie Kirk, 24, Detroit, apparently went out of control on a westbound curve of M-14. The car careened 300 feet along the shoulder of the road, flew 108 feet through the air, bounced, and flew another 133 feet before landing on its wheels, according to Sheriff's Deputy Robert Aello, first officer on the scene.

All three passengers were thrown from the 1970-model car, which came to rest on Donald Eagle, 25 of Livonia. Eagle was killed instantly.

Jerry Kirk, the 13-year-old brother of the driver, died two hours after the accident at University Hospital in Ann Arbor.

Ronnie Kirk, the driver, is reported to be in critical condition at U. M. Hospital.

Sheriff Douglas Harvey said sheer speed caused the accident, adding that his officers had taken statements from two motorists who said the car had passed them at an estimated speed of more than 100 miles per hour just before the crash.

Major Crimes Jump 26% During 1970

Reported major crimes in Michigan in 1970 totaled 336,326, an increase of 69,353, or almost 26 percent, compared with 266,973 in the previous year, according to the 42th annual "Michigan Law Enforcement Officials Report on Crime" compiled by the State Police on data submitted by 406 police agencies.

This gave the state a crime rate for the year of 3,787, major offenses per 100,000 population, an increase of 23.1 percent over the rate of 3,075.1 in 1969. Major crimes on which the rate is based included homicide, rape, aggravated assault, burglary, robbery, auto theft, and felonious larceny.

The report notes that Michigan major crimes increased from 168,513 in 1966 to 336,326 in 1970, a change of 167,813 or 99.6 percent in five years.

Last year crimes against the person (homicide, rape, assault, and robbery) numbered 51,090, up 24.9 percent from 40,917 the year before.

Crimes against property (burglary, auto theft, felonious and simple larceny) totaled 433,840, up 25 percent from 347,237.

Most major crimes, 73.1 percent, in Michigan were committed last year by persons under 22 years of age. This percentage which has been high since at least 1962, is down slightly from the levels of 74.9 in 1969 and 75.8 in 1968.

Of 73,879 reported arrests of persons suspected of committing major crimes in 1970, there were 30,930 or 41.9 percent below 17 years of age and 23,034 or 31 percent in the 17-22 age group. There were 19,722 persons, or 26.7 percent, who were 22 years or older.

Chilly morning breakfast time calls for smoked sausage links served with scrambled or fried eggs.

MONEY TROUBLE?
ONE PLACE TO PAY!
Credit Management Service
662-2565
215 South Fifth Ave.
Ann Arbor
State Licensed and Bonded

Servicemen's Corner

Robert T. Magnan
Completes U. S. Navy
Recruit Training

Great Lakes, Ill.—Navy Seaman Robert T. Magnan, son of Mr. and Mrs. Leon A. Magnan of 513 Congdon St., Chelsea, Mich., was graduated from recruit training at the Naval Training Center.

He is a 1971 graduate of Dexter High school, Dexter, Mich.

Pvt. David T. Knorpp
Completes Basic Course
At Ft. Knox, Ky.

Ft. Knox, Ky.—Army Private David T. Knorpp, son of Mr. and Mrs. C. M. Knorpp, 630 W. Main, Manchester, Mich., recently completed eight weeks of basic training at the U. S. Army Training Center, Armor, Ft. Knox, Ky.

SPECIAL

COUPON

ALL FLAVORS
FAYGO POP

1 Quart
Non-Returnable
Bottle

9¢

With
This Coupon

Offer Expires July 3, 1971

COUPON

OPEN SUNDAYS For Your Shopping Convenience

Open 6 a.m. to 11 p.m. 7 Days a Week
**GALLUP-SILKWORTH
PUMP & PANTRY**
295 S. Main St., Chelsea Phone 475-7051

Jiffy market

COMPLETE SUPER MARKET

BIG ENOUGH TO SERVE YOU.....SMALL ENOUGH TO KNOW YOU!

Corner of SIBLEY & WERKNER RDS....CHELSEA, MICHIGAN

SALE PRICES EFFECTIVE THURSDAY, JULY 29, THRU SUNDAY, AUGUST 1, 1971.

Store Hours Are 7 a.m. to 10 p.m. 7 Days A Week

FROM YOUNG PORKERS
WHOLE PORK LOINS

12-Lb. Avg.
Sliced, wrapped, quick
frozen at no extra charge **69¢ lb.**

LEAN - MEATY - TENDER
SPARE RIBS

Ideal for
Barbecuing **69¢ lb.**

FARMER PEET'S
FARM HOUSE
BACON

1-Lb.
Pkg. **43¢**

HOME-GROWN
Tomatoes

29¢ lb.

HYGRADE'S
**BALL PARK
HOT DOGS**

1-Lb.
Pkg. **75¢**

MICHIGAN BRAND
BUTTER

Sweet Cream Butter

73¢ lb.

RISDON'S TOP QUALITY HOMOGENIZED

1/2 gal. 45¢ MILK gal. 88¢

BREAST O' CHICKEN
CHUNK STYLE

TUNA

6 1/2-Oz.
Can **35¢**

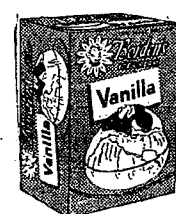
ASSORTED FLAVORS

JELL-O

3-Oz.
Pkg. **9¢**

**JIFFY
CAKE MIXES**

Your
Choice **10¢ pkg.**



SPECIAL
SALE
Borden's
Ice Cream

Half
Gallon-- **69¢**

KRAFT'S

MIRACLE WHIP

1-Qt.
Jar

45¢

**COLD
BEER**

New 2,000-Case Cooler
Now Open!

CURTISS

Marshmallows

10-Oz.
Pkg. **19¢**

KLEEN-MAID

BREAD

Large 1 1/4-Lb.
Loaf **19¢**

FROM THE LAND OF PEPSI
The New 8-Pak 12-Oz. Cans

**NU-GRAPE
MOUNTAIN DEW
PEPSI-COLA
PATIO ORANGE**

8

12-Oz.
Cans

98¢

MARATHON GAS PUMPS

FIRE SALE!

Gas Sales So Hot they burned
out the village main power line
between pole and the store
Tuesday evening.

NOTE:

**Our Prices
Include All Taxes!**

MANY THANKS

To the Village Electricians and
Earl Heller for their fast repairs
in getting us back into business.

— Gene

**2 CYCO
POWER FUEL**

Works wonders for your outboards,
power mowers, chain saws,
go-karts.

49.9¢ gal.

This is one store where
there are no gimmicks -
stamps, coupons, fake prices
or other cheap tricks!

YOU ALWAYS GET
TOP QUALITY MERCHANDISE
AT THE RIGHT PRICE
AT YOUR JIFFY MARKET!

**MARATHON
TOP QUALITY
MOTOR OIL**

10, 20 or 30 weights

39¢ qt.

OPEN DAILY and SUNDAY, 7 a.m. to 10 p.m.

Coming August 1, 1971
the **COUNTRY SOUND**
to
WNRS RADIO
1290 AM

New for Fall!
Ladies Pant Suits,
Dresses, Slacks, Shells,
Sweaters.

Children's Back-to-School
Dresses, Jackets, Coats.

Men's Jackets,
Levi's, Shirts.

— ★ —
LAY AWAY NOW
WITH A LITTLE DOWN
at

DANCER'S

Chelsea's Friendly Dept. Store

IT'S EASY TO BUY-SELL-RENT- HIRE & FIND WITH

WANT ADS

Just
Call
GR 5-3581

WANT ADS

The Chelsea Standard
WANT AD RATES
PAID IN ADVANCE—All regular ad-
vertisements, 10 cents for 25 words
or less, each insertion. Count each
figure as a word. For more than 25
words add 2 cents per word for each
insertion. "Blind" ads or box num-
ber ads, 35c extra per insertion.
CHARGE RATES—Same as cash in
advance, with 15 cents bookkeeping
charge if not paid before 5 p.m. five-
day preceding publication. Pay in ad-
vance, send cash or stamps and save
15 cents.
DISPLAY WANT ADS—Rate, \$1.10 per
column inch, single column width
only. Spacing and layout high type
only. No borders or boldface type.
Minimum 1 inch.
CARDS OF THANKS or MEMOR-
IALS—Single paragraph style, \$1.00
per insertion for 50 words or less; 2
cents per word beyond 50 words.
COPY DEADLINE—6 p.m., Tuesday
week of publication.

IF carpets look dull and drear,
remove spots as they appear
with Blue Lustre. Rent electric
shampooer \$11. Dancer's.

USED CARS

'70 Cougar, factory air
'70 Cobra 2-dr. hardtop
'70 Thunderbird, with air
'69 LTD 4-dr. with air
'69 Chev Impala
'67 Mercury 2-dr. hardtop
'67 VW
'67 Mustang
'66 Ford LTD 2-dr. hardtop
'64 Falcon 4-dr.
'60 Falcon 4-dr.

TRUCKS

'67 Ford 3/4 ton
'67 International 3/4 ton pick-up,
\$795

See Us About
Demonstrators
and Driver
Education Cars

PALMER FORD
Open Mon., Wed., Thurs., Till 9:00
Chelsea GR 5-3271

FOR SALE—1970 500 cc. Suzuki,
\$750. Phone 475-7831 after 4
p.m.

All Insurance Needs
In the convenience of your own
home — or mine

N. H. Miles, Allstate
Call GR 5-8334 after 6 p.m.

FURNITURE SALE
ENTIRE STOCK
DISCOUNTED 10 TO 50%
Last 3 Days!
Merkel Furniture
Phone Chelsea 475-8621

THE BEAUTIFUL BRUTES are
here! Allstate snowmobiles.
Come see them at Han-Cro Winter
Sports, at 15901 Seymour Rd., or
call 475-7212.

Friendliness
We serve with
the devotion
of a
true friend.

Staffan Funeral Home
"Funeral Directors for Four Generations"
124 PARK STREET PHONE GR 5-4417

WANT ADS

BOARDING, trimming, traing,
Town and Country Kennels,
Jackson Rd. at Baker. NO 8-7800.

Gem Travel Trailers
and Campers
PICK UP COVERS
4" \$100.00
28" \$179.00 and up
Triangle Sales
Chelsea 475-2502

**CLOGGED
SEWER**
**Reynolds Sewer
Service**
We Clean Sewers Without Digging
Drains Cleaned Electrically
FREE ESTIMATES
2-YEAR GUARANTEE
Phone Ann Arbor NO 2-5277
"Sewer Cleaning Is Our Business—
Not a Side-Line"

KNAPP SHOES
For Cushion Comfort
Robert Robbins
475-7282

FOR RENT OR LEASE—Modern
building, 1,430 sq. ft. Suitable
for restaurant, party store, etc.
Heavy traffic on I-94 exit. Phone
475-8487 after 5 p.m.

**The
Summer Sale
Is On
at
DANCER'S**

3-FAMILY BARN SALE—Space
heater, sewing machine, baby
items, lamps, tables, records, books,
men's and women's clothing, and
other household items. Give away
prices. Friday, Saturday and
Sunday, July 30 through Aug. 1
at 520 McKinley.

Hearthside Yarn Shop
5450 Conway Road
Yarns, needles, accessories
Free instructions in knitting and
crocheting with follow-up assist-
ance.
Orders taken for hand-made items.
Ph. 475-2014

FURNITURE SALE
ENTIRE STOCK
DISCOUNTED 10 TO 50%
Last 3 Days!
Merkel Furniture
Phone Chelsea 475-8621

**FORMAL WEAR
RENTAL SERVICE**
Proms - Weddings - Special Events
6 different colors.
Foster's Men's Wear

WANT ADS

ROBERT PATRICK for home im-
provement, building and main-
tenance. Ph. 475-7480.

HAMMOND ORGAN teachers
wanted to teach in their own
homes. Call Grinnell Brothers, Ann
Arbor, 662-5667.

CALL FRANK for all your carpet
cleaning jobs, morning or week-
end. Needs only 3 hours to dry.
Only 10c per square foot. Phone
now for free estimate, 761-4328.
All work guaranteed.

PIANO TUNING, Chelsea and area.
Facilities for reconditioning and
rebuilding. Used piano sales; re-
conditioned grands and verticals.
E. Eklund, 425-4428.

**Contractor Servicing
Chelsea, Dexter and
Manchester Areas**
Complete Home Remodeling
Inside and Outside
Specializing in extra living space,
recreation rooms, kitchens and
paneling. Installing all aluminum
products, 5" eavestroughs, custom-
made awnings, windows and doors,
aluminum siding in many selected
colors and styles.

Please Call
DALE COOK
Chelsea 475-8863

FURNITURE SALE
ENTIRE STOCK
DISCOUNTED 10 TO 50%
Now thru July 31
Merkel Furniture
Phone Chelsea 475-8621

**COMPLETE
\$23,900
on your lot**
INCLUDES:
—976 square feet of living area
—Full basement, with laundry
facilities
—Two-car attached garage
—Three carpeted bedrooms
—11'x20' carpeted living room
—Cushioned sheet vinyl in kitchen
—Fruitwood finished Mediterran-
ean cupboards with stainless
steel sink
—Hotpoint stove and refrigerator
included
—48" walnut vanity in bathroom
—Fiberglass Unitub
—Pre-finished walnut interior
doors and trim
—Pre-finished white aluminum
eavestroughs
—Concrete porches, sidewalk,
gravel drive
—2,000 well and septic allowance
included.

**NO MORTGAGE MONEY
PROBLEMS HERE!**
**W. C. Weber
Construction Co., Inc.**
12290 Jackson Rd., Chelsea, Mich.
475-2828

**Real Estate
For Sale**
2-BEDROOM, modern ranch type
home on 5 acres. With pond.
Call
Kern Real Estate
Phone 475-8563

2-CYCO FUEL
For All 2-Cycle Engines
WHITE GAS
Available at
**Gateway
Sports Centre, Inc.**

**ELECTROLUX
VACUUM
CLEANERS**
SALES and SERVICE
JAMES COX
Ph. 428-2931 or 428-8221
Manchester



"Shall I look for a plumber in the Standard Want Ads now—
or shall I wait until after you fix it?"

WANT ADS

**WORK SHOE
HEADQUARTERS**
Famous Red Wing Brand
\$12.95 to \$26.95
Foster's Men's Wear

WANT ADS

**WORK SHOE
HEADQUARTERS**
Famous Red Wing Brand
\$12.95 to \$26.95
Foster's Men's Wear

G. G. HOPPER
Building Contractors
Phone GR 5-5581
Gregory 498-2148

**A fine selection of
New and Used Cars
for immediate delivery**

**Harper Pontiac
Sales & Service**
475-5311
Evenings, 761-2999

FURNITURE SALE
ENTIRE STOCK
DISCOUNTED 10 TO 50%
Last 3 Days!
Merkel Furniture
Phone Chelsea 475-8621

**BLUE LUSTRE
RUG SHAMPOO**
IS AN
EXCELLENT RUG CLEANER.
Rent our small or our
large shampoo machines.
Chelsea Hardware
Phone GR 9-6311

REAL ESTATE
SYLVAN TOWNSHIP—Well lo-
cated 64 acres excellent, level
land.
5-ACRE BUILDING LOT.
10-ACRE PARCEL, Grass Lake
schools, \$600 per acre.
**R. D. Miller
REAL ESTATE**
Real Estate Broker
475-7811
15775 Cavanaugh Lake Rd.,
Chelsea, Mich.

**WE never get our
signals crossed . . .**
No confused moments here!
We get your instructions right
the FIRST time . . . then hop
to your job.
If this is the kind of prompt, efficient
service you're looking for . . . you're
the kind of customer we're looking for.
PURE OIL PRODUCTS
JIM'S PURE SERVICE
Tires — Batteries — Tune-Ups — Brake Service — Wheel Alignment
PHONE 475-2822

WANT ADS

EXPERIENCED CHILD CARE in
my home, any time. Ph. 428-4192.
PIANO TUNING at savings! New
man in area offering introductory
rates to build clientele. 769-0130.

**Custom
Kitchen Cabinets
and
Formica Tops**
Made to Order
475-2857

FURNISHED APARTMENT for
rent, 1 bedroom, exterior area.
Available mid-July. Ph. 426-3961.

FURNITURE SALE
ENTIRE STOCK
DISCOUNTED 10 TO 50%
Last 3 Days!
Merkel Furniture
Phone Chelsea 475-8621

WEAR BEAUTIFUL CLOTHES,
make friends, earn money at the
same time. Become a Beeline styl-
ist. For interview call after 2 p.m.
Mrs. Reed, 498-2244.

WANT ADS

NEW CAR YEAR END SALE

"BUICKS"
1971 Electra 225 4-dr. hardtop (2)
Sticker price, \$5781.80. Sale price
\$4833.62.
1971 Electra 225 2-dr. hardtop,
Sticker price, \$5779.36. Sale price
\$4831.64.
1971 LeSabre 4-dr. sedan custom,
Sticker price \$4960.21. Sale price
\$4191.33.
1971 LeSabre 4-dr. sedan custom,
Sticker price \$4873.00. Sale price
\$4123.88.
1971 LeSabre 4-dr. sedan (no air),
Sticker price \$4304.89. Sale price
\$3675.10.
1971 Skylark 4-dr. sedan, Sticker
price \$4275.58. Sale price \$3736.37.

"OLDSMOBILES"
1971 98 Delta 2-dr. hardtop.
Sticker price \$6199.17. Sale price
\$5163.91.
1971 98 Delta 4-dr. hardtop (demo),
Sticker price \$5956.69. Sale price
\$4974.05.
1971 98 Delta custom 2-dr. hard-
top. Sticker price \$5116.44. Sale
price \$4314.75.
1971 98 Delta 4-dr. hardtop (demo)
Sticker price \$5086.98. Sale price
\$4305.19.
1971 98 Delta 4-dr. hardtop. Sticker
price \$4950.55. Sale price
\$4185.18.
1971 Vista Cruiser 3-seat. Sticker
price \$5121.59. Sale price \$4480.30.
1971 Cutlass Supreme convertible.
(No air). Sticker price \$4251.13.
Sale price \$3729.11.
1971 Cutlass 2-dr. hardtop (2).
Sticker price \$4135.80. Sale price
\$3618.96.
1971 Cutlass 2-dr. hardtop (2) (no
air). Sticker price \$3719.78. Sale
price \$3294.84.
1971 Cutlass 4-dr. sedan (no air).
Sticker price \$3736.69. Sale price
\$3311.02.

Most of these cars have vinyl
tops, power steering, power brakes.

HELP NEEDED
Mature saleslady for
Downtown Store
in Chelsea

Write, stating qualifications,
care of Box AU-29,
Chelsea Standard, Chelsea.

**The
LUGGAGE
Selection Is Good
at
DANCER'S**

**Sprague Buick-Olds-
Opel, Inc.**
1500 S. Main St.
Chelsea, Michigan
Phone 475-8664

**POWER MOWERS
AND RIDERS**
REDUCED FOR
SUMMER CLEARANCE.
Chelsea Hardware
Phone GR 9-6311

**BIG SAVINGS
on
SHOES**
Bargain Floor
DANCER'S

WANT ADS

XEROX COPIES made. Merkel
Brothers.

PATCHING and PLASTERING.
Call 475-7489.

ALUMINUM SIDING, custom trim,
and gutters. Dave's Siding Co.
Phone 498-2423.

FOR REAL DOLLAR SAVINGS
be sure and see us before you
buy any new or used car. Palmer
Motor Sales, Inc. Your Ford Deal-
er for over 50 years.

HOUSEWIVES—Sell wearing ap-
parel, part-time, set your own
hours. High commission. Receive
a complete Bee-Line fashion ward-
robe twice yearly. No investment.
Call (313) 423-4651 or (313) 423-
8945.

Real Estate For Sale
BRAND NEW—3-bedroom brick,
picture window overlooks golf
course, 2 ceramic baths; 2 fire-
places, large (unfinished) rec room,
2-car attached garage, \$48,500. Fi-
nancing available.

7 1/2 ACRES—All inside village
limits. Has 3-bedroom house,
garage, 745 feet of railroad front-
age. \$30,000. Terms.

BUILDING LOT—One mile east
on Old US-12. 135 feet of front-
age. 1 1/4 acres. \$4500. Terms.

10 ACRE LOT—Several to choose
from. 2 1/4 miles out. Front \$7,500
up.

CLARENCE WOOD BROKER

Efficient PERSONAL Service
646 Flanders St.
Phone 475-2093 or 475-8217

FOR SALE—GE electric dryer in
good condition. Norge washer
needs repair. Both for \$50. Call
426-3893.

**4-H and F.F.A.
Members**
We have
a good supply of:

—SHOW HALTERS
—SHOW STICKS
—BRIDLES
—HALTERS
—LINE COMBS
—MANE COMBS
—CURRY COMBS
—HOOF PICKS
—HOOF KNIVES & NIPPERS
—BRUSHES
—LEADS
—FEED PANS

Chelsea Hardware
Phone GR 9-6311

HELP NEEDED
Mature saleslady for
Downtown Store
in Chelsea

Write, stating qualifications,
care of Box AU-29,
Chelsea Standard, Chelsea.

**The
LUGGAGE
Selection Is Good
at
DANCER'S**

**Sprague Buick-Olds-
Opel, Inc.**
1500 S. Main St.
Chelsea, Michigan
Phone 475-8664

**POWER MOWERS
AND RIDERS**
REDUCED FOR
SUMMER CLEARANCE.
Chelsea Hardware
Phone GR 9-6311

**BIG SAVINGS
on
SHOES**
Bargain Floor
DANCER'S

WANT ADS

VACUUM CLEANERS—Electro-
lux, authorized sales and service.
James Cox, Manchester. Ph. 428-
2931 or 428-8221.

TREE REMOVAL DONE—Also
buyers of standing timber and
walnut trees. Chelsea 475-7681.

Fireplace Builder
Field stone mason, block and brick
mason, tick pointing.
FREE ESTIMATES
Call 475-8025 after 3 p.m.
Patrick Grammatico

8' HYDROPLANE
With steering controls. Completely
fibreglassed, perfect condition.
Phone 663-8228.

**Seamless
Aluminum Gutters**
White or brown,
5-Year Guarantee.
WILSON METAL SHOP
428-8468 - Manchester

**CHELSEA
School District
Eight Beautiful
Country Sites
in
Noah Heights
Adjacent to Half
Moon Lake State Park**

**Model Open 2-6
Sat. and Sun.**
Any time by appointment

Featuring
—Carpeting throughout
—2-car garage
—Full basement
—Hotpoint stove and
refrigerator
—All aluminum exterior
—Concrete porches, sidewalk,
gravel drive
—Storms and screens

COME OUT AND TALK TO US
ABOUT OUR WIDE VARIETY
OF HOME PLANS.
We know you will be pleased.

**W. C. Weber
Construction Co., Inc.**
12290 Jackson Rd., Chelsea, Mich.
475-2828 668-1985 475-4977
CHELSEA'S PREMIER BUILDER

FURNITURE SALE
ENTIRE STOCK
DISCOUNTED 10 TO 50%
Last 3 Days!
Merkel Furniture
Phone Chelsea 475-8621

—SPECIALS—
ARMOUR'S MIRA-CURE
Bacon 1-lb. pkg. 59c
MCDONALD'S VANILLA
Ice Cream . . . 1/2 gal. 69c
ECKRICH ALL-MEAT
Bologna . . . 1-lb. pkg. 79c
DUNCAN HINES
Cake Mixes 3 for 89c
MICHIGAN
Potatoes 10 lbs. 65c
10-OZ. NO-RETURN BOTTLES
Pepsi-Cola 8 pak 89c
LEON'S DELICATESSEN FOODS
Potato Salad - Spring Salads - Baked Beans
SCHNEIDER'S
MEATS - GROCERIES
PHONE 475-7600 — 121 S. MAIN ST.

WANT ADS

SEE US for transit mixed concrete. Klump Bros. Gravel Co. Phone Chelsea 475-2530, 4920 Loveland Rd., Grass Lake, Mich. x40tf

TRAVEL TRAILERS — 13-ft. and up; 10x55 ft. trailers. John R. Jones Trailer Sales, Gregory, Mich. Phone 498-2655. x49tf

HOUSE FOR SALE

Living quarters upstairs—kitchen, 2 large rooms, bath, hall closet, walk-in attic off kitchen, refrigerator, stove. Private entrance. Ground floor—6 rooms. Bath, large glassed-in front porch, refrigerator, stove, carpeting, basement, 3-car garage, garden space, large back yard. 1 1/2 lots. Can rent both upstairs and down. Shown by appointment only. Location, 146 Park St. Call 475-8502 or 475-2039. x49tf

STANLEY'S TREE SERVICE

Trimming, removals, cabling, braising, surgery, etc.

FREE ESTIMATES

Phone 428-8967
If no answer, ph. 428-8066 x43tf

Exceptional Home for exceptional people

NEW LISTING near Chelsea on M-52. Almost new two-level home, 2,080 square feet on 2 1/2 acres. Hillside, landscaped, wooded, central air conditioning, oil heat, garage with storage area, upper and lower wood decks, 26' by 12' carpeted living room with fireplace, large paneled rec. room with fireplace, two bedrooms, two baths, wood kitchen cabinets, built-in range and oven, electric dishwasher and garbage disposal. Shown by appointment only.

Mary Wolter Real Estate

7421 Dexter-Pineckey Rd.
Call 475-7660 or 426-8138 x7

YARD SALE — 8475 W. Huron River Dr. July 30-31. 8 a.m. to 6 p.m. x6

WANT ADS

FOR SALE — Decca electric guitar, used one month. Also, size 9E football shoes, only used once. Phone 663-3238. x46tf

WANTED

TYPIST

Accurate, 55-60 wpm.
Apply in Person

Chelsea Standard

300 N. Main St. Ph. GR 5-3581
-28tf

CAR RENTAL by the day, week-end, week or month. Full insurance coverage, low rates. Call Lyle Chriswell at Palmer Motor Sales, GR 5-3271. x25tf

CUSTOM TAXIDERM — Call Jim's Taxidermy Shop, 475-2805. x6

WANTED TO RENT — 2-bedroom house or lower 2-bedroom flat. Call 971-3461 or 475-2709. x5tf

CAR & TRUCK LEASING. For details see Lyle Chriswell at Palmer Motor Sales, GR 5-3271. x49tf

REAL ESTATE

50 ACRES VACANT — M-36, Unda-dilla Twp. \$30,000.

RIVER FRONT LOTS — 2 large lots on Huron River near Buck Lake.

10-ACRE PARCELS — Near Doyle Rd., \$1,000 an acre will release building site.

TWO LOTS — Guaranteed building site near Patterson Lake. Both for \$1,500.

2-ACRE BUILDING SITE — Wooded level, Portage Lake area. \$12,000.

Mary Wolter Real Estate

7421 Dexter-Pineckey Rd.
Call 475-7660 or 426-8138 x7

WANTED — Good watchdog dog farm. Prefer female German Shepherd. One-man dog only. Ph. 479-9468. x6

FOR SALE — 1970 Chevrolet Impala 4-dr. hardtop. Has everything only \$2,450. See at 1817 Rank Rd., 7 miles west of Chelsea, on Old US-12, 1 mile south on Rank Rd., or call 479-6468. x6

WANT ADS

GUJAR INSTRUCTION: Classical, folk, pop. Emphasis on theory. Only \$8.50 for 1/2 hour. Phone 475-1129. x47tf

PIANOS TUNED — Players and reed organs rebuilt. D. Harvey, 1201 Shady Lane, Tecumseh. 423-8045 after 4 p.m. x44tf

MOTHERS! Here's a job you can handle. Have a debt-free Christmas plus earn \$1,000 or more from August to December. Adorable toys, 80 percent at \$3 and under. No gimmicks, collecting, or delivering. No cash investment. Free supplies. For information without obligation call collect: 426-2041, (517) 468-3477, or (517) 371-2948. x15

G. L. WELCH DECORATING CO. — Licensed and insured. Interior and exterior. Commercial and residential painting. Work guaranteed. 498-2847 Gregory, Mich. x36

FOR SALE — 2.3 acres with private drive off Old US-12 West. \$6,500. Phone 475-8904. x44tf

WANTED — Blue clay for stable floors. Call 662-5240 after 6:00 p.m. x6

EXPERIENCED CHILD CARE in my home, any time. Phone 781-8701 after 6 p.m. x5tf

FOR SALE — 1969 4-door Deluxe Mercury, 22,000 miles, 1 owner. Phone 426-4536. x6

FOR SALE — Chihuahua puppies, AKC, long coat females. Phone 475-2638 a.m. or after 9:30 p.m. x6

Is Your Acreage Here?

CHELSEA — Vacant lot just east of 525 Chandler Street.

THREE ACRES — Waldo Rd., 200' frontage.

TWO ACRES — Ivy Road, 200' frontage.

TEN ACRES — 330' frontage on Meister Road.

FOUR PLUS ACRES — Trinkle Road, about 600' frontage.

THREE ACRES — Corner of Roepke and M-52, high and dry, beautiful site.

THIRTY-FIVE ACRES PLUS — Corner of M-52 and Roe Road. This with a small lake.

Please Call

Mr. McKernan

475-8424
Representing
SOUTHSIDE REALTY
1-517-522-8469 x6

WANT ADS

FOR SALE — 2 good quarter horses, used to children. 789-2590 after 6 p.m. x49tf

FOR SALE, by owner — 4-bedroom home, kitchen, dining room, glassed-in porch, full basement, one-car garage. Close to the elementary school. Priced at \$23,000. Will consider land contract. Ph. 475-7365. x32tf

Mark Your Calendar SIDEWALK SALE on Friday & Saturday, Aug. 13 and 14

400 18"x27" throw rugs, all serged. Wide variety of colors. Many smaller and larger sizes.

CARPETING LEFT — OVERS — Ends of rolls. Many colors, shags, nylons, acrylics, rubber backs, at way down prices.

SEVERAL QUARTS and gallons of Dutch Boy flat wall enamel, satin gloss enamel and house paint at give-away prices. (Mixer's errors and discontinued colors.)

DISCONTINUED LINE of oil stain in 1/2 pints and quarts at 1/4 off regular price.

LINOLEUM — Inlaid, embossed and Corlon. Ends of rolls, discontinued patterns. Small pieces for cupboard drawers, etc., at sharply cut prices.

MANY OTHER ITEMS too numerous to mention will be on sale — Furniture, gift items, etc.

MERKEL BROS.

Open Mon. & Fri. Until 9
Ph. Chelsea 475-8621 x7

FOR SALE — Twin tortoise shell kittens, 50c each or 2 for 75c. Katie Donkin, ph. 475-7261. x5tf

50 ACRES, with small spring-fed pond, Gregory area. Will divide. Call 475-8196 or 498-2618. x6

AKC St. Bernard puppies. Pick out your little "saint" now. Deposit will hold. Ph. 426-2111. x7

COUNTRY APARTMENT for rent. Immediate occupancy. No pets. Unfurnished. Call nights, 475-8334. x8

OFFICE GIRL WANTED — Full time. General office work with a long established local firm. Good typist. Good wages and fringe benefits. For appointment call 665-8811. x6

LOST — St. Bernard male dog. Answers to Tiny. Phone 479-6468. x6

WANT ADS

THE LITTLE FLOWER SHOP

3451 Waltrous Rd., Chelsea
Phone GR 5-8508
Flowers, corsages, arrangements and plants.

Weddings and funerals. x47tf

POODLE GROOMING in your home. \$50 miniature, \$15 standard. Mrs. Hull, Ph. 1-227-4271. x7

BABYSITTING in my home. 208 South St. Ph. 475-7822. x7

HELP WANTED — Please call in person. 119 S. Main. x4tf

APARTMENT FOR RENT — Furnished, 1 bedroom. Phone 475-8911. x5tf

THORNTON 475-8857

CORNER LOT — Older 3-bedroom home on a large tree-lined lot, porch across front of house, fireplace, large oak trimmed living room, formal dining room, 2-car barn-type garage.

TRI-LEVEL — Redwood siding, 4 1/2 bedrooms, 1 1/2 baths, family room, sewing room. Just lots of living space. Immediate occupancy.

LARGE LOT — 3-bedroom ranch, screened porch, large kitchen, tiled bath, 2 1/2-car garage. Immediate occupancy.

LAKE-FRONT — Beautiful 2-bedroom brick ranch home, 1 1/2 baths, fireplace and kitchen with many built-ins, porch and patio, all situated on a wooded peninsula. A smaller 2-bedroom fully carpeted income or mother-in-law year around cottage goes with it. Call us for an appointment.

ECONOMY — Enjoy a new kitchen, large carpeted living room and 2 bedrooms overlooking the Huron River. Needs some fixing. \$16,900.

LAKE-FRONT — 3 bedrooms, large living room with stone fireplace, 2 baths and a walk-out basement, \$25,000.

FARM — 80 rolling acres, 3-bedroom house, barn and outbuildings. Completely fenced.

BUILDING SITES

3 ACRES rolling, Chelsea.
1 1/2 ACRES wooded, Chelsea.
3 ACRES wooded, Chelsea.
3 ACRES with stream, Dexter.

MULTIPLE LISTING

John C. Pierson

ASSOCIATE

Robert H. Thornton Jr.
REALTOR

105 N. Main, Chelsea
475-8629 eve. 475-2064, 475-8857 x6

LANEWOOD 2-story, 3 bedrooms, family room, 1 1/2 baths, living room, dining room, carpeted, hardwood floors in hallway, beams. Air - conditioned. Refrigerator, built-in range, garbage disposal, washer and dryer, humidifier, TV antenna with rotor, fire alarm system, 1 1/2-car garage attached, with power lift door, landscaped, fenced back yard, \$31,900. 32 Sycamore. Shown by appointment only. Phone 475-7851. x6

FREE KITTEN to good home. Ph. 475-8276. x6

FOR SALE — 1 1/4-ton hydraulic service jack, Skil hand saw bench, 6-volt headlamp conversion kit, new 6-ft. aluminum roll-up awning, power reel lawnmower, set tire chains, other misc. items. 221 E. Middl. Ph. 475-7087. x6

WE NEED 2 or more bedroom house or apartment, furnished or unfurnished, in Chelsea-Dexter area. References. Phone collect (517) 439-9196 after 4 p.m. x7

WOMAN WANTED — For house-keeping on farm. To age 40. Live in, plus small salary. Phone 479-6468. x6

LOT FOR SALE — 1 1/4-acre lot, approximately 1 mile from village limits. Blacktop road. On city gas line. 135 feet frontage. \$4,500, terms possible. Phone 475-8217 or 475-2038. Clarence Wood, Broker. x7

FOR RENT — Plain furnished basement apartment, all utilities furnished, \$100 per month. Adults only, no drinkers, no pets. Call 475-8924, Chelsea. x6

GARAGE SALE — 20-inch bicycle, new 16- and 26-inch bike tires, bike saddle baskets, 1-32 scale car race set, Tyco HO train set, some clothing, toys, glassware, etc. 221 E. Middl. Ph. 475-7087. x6

YARD SALE — Household items, handymen tools, antiques, lot of other items. 1817 Rank Rd., 7 miles W. of Chelsea on Old US-12, 1 mile south on Rank Rd. Thursday to Sunday, 9 a.m. to 6 p.m. x6

WANT ADS

PRINTING from John's Shop — for weddings, anniversaries or any occasion. Satisfaction guaranteed. Prompt service, reasonable prices. Phone 475-7500. x9

REDUCE EXCESS FLUIDS with Fluidex, \$1.09. Lose weight safely with Dex-A-Diet, 98c, at Chelsea Drug. x16

REPAIR SERVICE for household refrigerators, freezers and garbage disposers. Call Bill, 426-8314. x36

HOUSEWIVES! MOTHERS! the "in place" this year... House of Lloyd. No collecting. No delivering! Free supplies! Bonuses! Weekly, 2 free gifts! Call Margaret, 683-8998. x13

FOR SALE — 12' aluminum boat, electric motor, battery and oars. Call 475-2594 after 4 p.m. x36

WANTED TO RENT — Family needs 3 or 4 bedroom house by Aug. 28. Yard and family room desired. 662-3869. x36

FOR SALE — Registered Morgan Gelding, 16 hands, five year old, English-Jumper prospect. \$900. North Territorial. 426-8110. x36

FOR SALE — Apt. size electric stove, \$20, vinyl sofa bed \$25. Both in excellent condition. Ph. 475-2753. x36

TRENCHING — Water, electrical lines, footings, etc., 4 to 14 inches wide, 12 to 6 feet deep. Call Charles Slocum, 475-7611 evenings. x6tf

GARAGE SALE July 31-Aug. 1. Riding lamp, TV, clothes, dishes, toys, tires. Lots of miscellaneous. 4904 Wylie Rd. Dexter, 426-8328. x6

WANTED — New or used fiction and non-fiction books for use at St. Louis School for Exceptional Boys. Age group from 4 years to 10 years. Any book you donate will be appreciated. Call 475-8480 Evenings 475-5281 for pick-up. x8

FOR SALE — Refrigerator, \$20. 17500 Fahrner Rd., Sylvan Center. x6

FOR SALE — 12 laying hens and rooster, heavy breed. Ph. 475-2189. x6

WANTED — Mature, dependable woman to babysit in my home from 8 a.m. to 4 p.m., for one child during school year. Ph. 475-7359. x7

HOUSE FOR RENT — 3 bedrooms, large yard. For more information call 475-8081 after 4 p.m. x2tf

FOR SALE — Beagle, 5 mo. old, Beautifully groomed, tri-colored. \$15. Terry Ellenwood. 475-6591. x6

GARAGE AND YARD SALE, 331 Pierce St., Thursday, 29th thru Sat. 31st. 9 a.m. to 5 p.m. Furniture, tools, appliances, books, old records, many antiques. x6

YARD SALE — Sat. July 31, 10 a.m. to 4 p.m. 421 Chandler. x6

RIDING EVERY DAY — Catering to groups. Ask about our extended and pre-dawn rides. Shar on Hills Ranch, 428-9452. x6tf

FOR SALE — Three 26-inch bicycles. Call between 4 and 6 p.m. 475-2886. x6

LOST — Sunday, July 25, vicinity of Cavanaugh Lake Rd., wool shoulder bag, blue with red trim, with children's swim suits, make-up, etc. Call D. E. Beach, 475-2852. x6

LOST — Siamese cross, gray with tiger points, female, lost in vicinity of Island Lake and Werkner Rd. Please call 475-8696. Ask for Dr. Clark. x7

FOR SALE — 1965 Honda, S-90. Excellent condition. Call between 4 and 5:30 p.m. 475-2427. x7

FOR SALE — 1948 Packard coupe. Phone 475-2570. x6

FOR SALE — 1/2 ton briquet coal, \$10; must be carried out. Phone 475-2580 after 5 p.m., no calls Saturday or Friday evening. x6tf

NEWSBOY WANTED for the morning Detroit Free Press. Route would cover Lanewood Sub-division area. Minimum age 6tf 475-7678

NOTICE — The girl that picked my choice hydrangea was seen. If she took them home her folks know she stole them. x6

THREE SILVER GREY and white, one all black, long haired kittens. Free. Phone 475-7309. x6

ADORABLE KITTENS — Persian type and short haired. Free to good home. Call 475-2952 or see at 3668 Chelsea-Manchester Rd. x7

FOR SALE — Iron bed, bureau, wardrobe with mirror, curtain stretchers. Phone 475-8878. x6

FOR SALE — Maltese pups. 20100 Old US-12, Chelsea. Phone 475-8784. x7

THANK YOU

We would like to express a sincere thank you to all of our neighbors, friends and relatives for the many acts of kindness shown us during the many weeks Billy was in the hospital and since his return home. Billy wishes to thank everyone for the many cheerful cards, fruit, toys and games, books and money that he received. Everything is deeply appreciated.

Mr. and Mrs. Bob Reed
Billy Reed.

Telephone Your Club News
To GR 5-3581

CARD OF THANKS
We wish to express our appreciation for the many acts of kindness and expressions of sympathy extended by our friends, neighbors and relatives and also the Rev. Olive Dickens, and Olive Lodge 157 F&AM at the time of the loss of our brother.
The brother and sisters of Ernest L. Pierce.

ABOUT HAIRPIECES
Modacrylic fibers, used in making hairpieces, are nonflammable and easily adaptable to the manufacturing process. Synthetic hairpieces are superior to human hairpieces in that they are non-allergenic and weather resistant, are unaffected by dampness or hairspray and are quite durable.

TODAY'S THOUGHT

By LOUIS BURGHARDT

Have you ever been unfairly criticized? Falsely judged? Perhaps gossiped about? If so, this thought may interest you...

When some fellow yields to temptation... And breaks a conventional law... We look for no good in his make-up... But God! how we look for a flaw!... No one will ask, "How tempted?"... Nor allow for the battles he's fought;... His name becomes food for the jacksals;... For us who have never been caught... "He has sinned!" we shout from the house tops, ... We forget the good he has done... We center on one lost battle... And forget the time he has won... "Come, gaze on the sinner!" we thunder... "And by his example he taught... That his footsteps lead to destruction,"... Cry we who have never been caught... I'm a sinner, O Lord, and I know it, ... I'm weak, I blunder, I fall... I'm tossed on life's stormy ocean, ... Like ships embroiled in a gale... I'm willing to trust in Thy mercy;... To keep the commandments Thou'st taught, ... But deliver me, Lord, from the judgment, ... Of Saints who have never been caught! (Author unknown)... BURGHARDT FUNERAL HOME, 214 East Middle St., Chelsea, Mich. Phone GR 5-4141.

SPECIALS

10-OZ. PKG. ECKRICH
Smok-y-Links 59c

5-OZ. CAN ARMOUR'S
Vienna Sausage, 2 for 43c

18-OZ. JAR WELCH'S
Strawberry Jam 42c

12-OZ. CAN GRAPE, ORANGE, STRAWBERRY, ROOT BEER
Topp Pop 6 pak 49c

1 QT. BOTTLE ROMAN
Dish Soap 2 for 49c

KUSTERER'S

FOOD MARKET
DIAL 475-2721 WE DELIVER

Dutch Boy Latex SATIN GLOSS ENAMEL



Now! an amazing new companion product to Dutch Boy Nalplex, the dependable interior latex flat wall finish. It's DUTCH BOY LATEX SATIN GLOSS ENAMEL. Odorless LATEX SATIN GLOSS ENAMEL combines the durability of a rugged, non-yellowing semi-gloss enamel with the ease and convenience of soap-n-water clean-up. Ideal for kitchens, bathrooms, playrooms or trim—wherever a beautiful, semi-gloss finish is desired.

While Paying for the Best, Why Not Buy the Best?

- ★ SUPERIOR ONE-COAT HOUSE PAINT
- ★ NEW SUPERIOR ACRYLIC LATEX PAINT
- ★ NEW LATEX GLOSS TRIM PAINT
- ★ OIL BASE TRIM PAINT

ALL EXTERIOR PAINTS

\$1.00 Off Reg. Price

For A Limited Time

For Best Results Use:

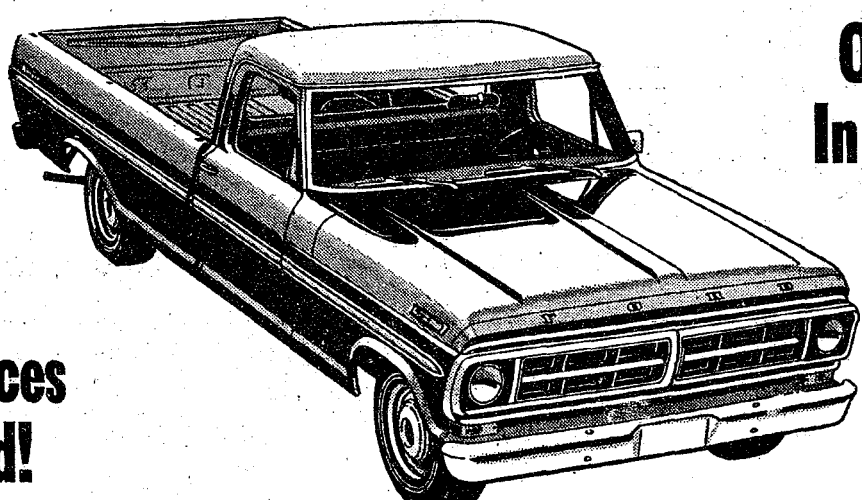
- DUTCH BOY NALPLEX for a Flat Wall Enamel
- DUTCH BOY PORCH-FLOOR Paint for Wood Floors
- DUTCH BOY LATEX Satin Finish Enamel
- DUTCH BOY FASTEP for Cement Floors, Porches, etc.
- DUTCH BOY NALCRETE for Cement and Block Walls
- DUTCH BOY URETHANE Gloss and Satin Finish for Woodwork and Furniture
- DUTCH BOY NEW WOOD STAIN for color tone on bare wood surfaces

MERKEL BROS.

Open Mon. & Fri. 'Til 9 Phone 475-8621

8th ANNUAL

PICK-UP SALE



Over 30
In Stock!

All Prices
Reduced!

ONLY \$2295⁰⁰

For a brand new 1971 Ford, 1/2 ton F-100 Pick-up with Fresh Air Heater, Back-up Lights, Side Mirror, Chrome Grille, Chrome Bumper, Spare Tire & fully Synchronized Transmission.

OUR SALES STAFF

Lyle Chriswell
John Popovich

Community Calendar

The fall meeting of the Rolling Pin League will be held Aug. 11, 9 a.m. at Chelsea Lanes.

Chelsea Women's Bowling Club meeting will be held Wednesday, Aug. 4, at 7:30 p.m. at Chelsea Lanes.

Fair Board next meeting Aug. 4 at the Fairgrounds.

CHS Class of '74 will meet at 1 p.m. Tuesday, Aug. 3 at Pierce Park.

St. Barnabas church bake sale 10 a.m. Saturday, July 31, at Daner's store in Chelsea.

Chelsea Social Service, second floor of the Municipal Building, is open each Tuesday and Thursday, afternoon from 2 p.m. to 5 p.m. to assist persons with problems, either through counseling, or referral to other agencies, when indicated. Limited financial help may be given. The office also maintains a clothing depot for new and used clothing and bedding which is given without charge. All visitors welcome. Phone 475-4681.

Chelsea Co-Op Nursery has announced that applications are still being accepted in the three-year group, and the non-assist. There is a waiting list in the four-year assist group. Anyone interested in enrolling is urged to call Mrs. Dennis Mull, 475-5411.

American Legion and Auxiliary hospital equipment available by contacting Loren Keezer at 475-2766 or 475-3431.

Chelsea Sidewalk Days, Aug. 13-14. Merchants are urged to start plans now for the annual event.

Civil Defense officials remind: "Tornado watch" means that weather conditions indicate a tornado may develop. "Tornado warning" means that an actual tornado funnel has been sighted. Information is available at the Chelsea Municipal Building or by contacting Elwyn Beach, civil defense director, 475-6031.

Crouch Family Visits Chelsea, In Massachusetts

Mr. and Mrs. Duane Crouch and their three children, 801 Flanders, recently visited Chelsea, Mass., during their first visit to the east. Chelsea, Mass., has a population of 33,000 and is a suburb of Boston.

While in Chelsea they stopped at the local newspaper, The Chelsea Record, where they were given a tour of the paper by the editor. Their picture appeared in The Record while the family was still in Boston. The Crouches have been residents of Chelsea, Mich., for the past 18 years.

Dexter Township Board meeting Tuesday, Aug. 3 at 8 p.m. at the Dexter Township Hall on Dexter-Pinckney Rd. Items to be discussed are: replacement of the treasurer; Noah Heights Subdivision No. 2; furniture for the town hall; rental policy for the town hall; and tow-away additions to the traffic ordinance.

North Lake United Methodist Church Country Fair, Aug. 7. Lunch wagon 11 a.m. to 5 p.m. Cafeteria dinner 5 p.m. to 9 p.m. Games, bake sale, hand-made bazaar and Christmas items. —adv7

Inquiries regarding the Chelsea blood bank may be directed to Harold Jones in the event that Mrs. Dudley Holmes is unavailable, or to Mrs. Pauline McKenna, American Red Cross in Ann Arbor, 971-5300.

TOPS Club at library, Wednesday afternoon group, 12:30 p.m. For information call 426-4549. Tuesday evening group, 8 p.m. For information call 475-8962.

Firemen Called For Grass Fires, Electric Line

The Chelsea Fire Department was called to extinguish a grass fire at 12:55 p.m. July 22. The grass fire had started near Cavanaugh Lake Rd. and Garvy Rd., spreading west to the viaduct on I-94. Chelsea firemen fought the fire for four hours.

On July 25, the Chelsea Fire Department sent tankers and men to assist the Dexter Fire Department in extinguishing a house fire on Jackson Rd., near Baker Rd.

A power line at Jiffy Market fell Thursday, July 27 at 8:58 p.m. Chelsea firemen were called to the scene, but no fire broke out. The village Light & Water Department repaired the line. There was no damage to the market.

Three Chelsea Girls On MSU Honors List

The following area students were among those on the recently released honors list from Michigan State University. Students appearing on the list must have at least a 3.5 grade point average out of a possible 4.0 points.

Brenda M. Collins, 203 Madison, Chelsea, a junior majoring in elementary and special education.

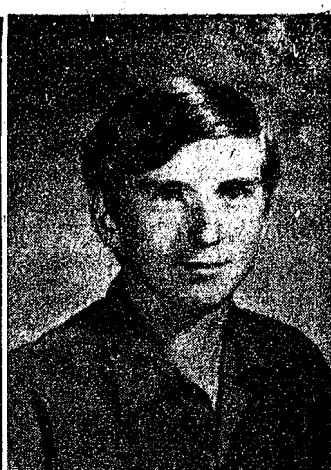
Brenda M. Seitz, 111 Arden Lane, Chelsea, a sophomore in mathematics and statistics.

Arlis Wiseman, 1250 Guenther Rd., Chelsea, a senior in human ecology.

Norene D. Lampe, 8090 Huron St., Dexter, a senior in business law and office administration.

Wendy Weeks, 4455 Loch Alpine Dr., Ann Arbor, a sophomore in liberal arts.

Gary N. Neuderfer, 304 Union, Manchester, a senior in agriculture.



ANTON 'RIC' SCHLOSSER

Manchester Scout Chosen To Attend World Jamboree

Anton "Ric" Schlosser, son of Mr. and Mrs. Anton Schlosser, 81-30 Gorman Rd., Manchester, is one of four Boy Scouts chosen to represent the Ann Arbor area at the 12th World Scout Jamboree to be held in Japan this month.

Scouts will leave July 30, spending the first 10 days at the jamboree held at the foot of Mt. Fuji, Japan's most famous mountain. They will then tour the country before returning to the states on Aug. 19.

"Ric" has been involved in scouting for nine of his 17 years. Currently a member of Explorer Scout Post 404, led by Ted Roberts, "Ric" is a Life Scout who is now working toward the rank of Eagle Scout. To earn the rank of Eagle, a scout must complete a total of 21 merit badges. Ten of the badges are chosen by the scout and the remaining 11 are required by the scouting organization.

Other scouts honored by selection for the trip are Phil Smith, 2240 Glendale, Ann Arbor; Ralph E. Smith, 1558 Barrington, Ann Arbor; and Bruce Thompson, 3612 Huron River Dr., Ann Arbor.

SUNDAY'S SERMON

★ God's Will

Some things other than taxes and death are certain in this life. Yesterday will never return. This very moment, this point in time that is NOW is fleeting and all too fast is gone.

We may be assured, as well, that God's love and God's will remain constant and unchanging. In moments of distress, we fear that God has forgotten us. We are disappointed if a cry for help does not bring instant relief. We believe that God has turned a deaf ear. All that we ask is a simple miracle! Have not miracles been performed for others?

God isn't listed in the yellow pages. You cannot phone for a miracle as you would order groceries or summon a plumber. You cannot go through life with the attitude that God is waiting in the wings when something begins to go wrong upstairs.

Put God upfront in your life. Keep your attention to God's will and you will have faith sufficient to meet the challenges of life.

Dress up canned baked beans with slices of canned luncheon meat and sauteed onion slices sprinkled with paprika. Do this before baking in a casserole to heat the beans.

DEATHS

Dorman L. Rogers

Long-Time Chelsea Resident Dies Saturday at Age 90

Dorman L. Rogers, 411 Nob Hill, Ann Arbor (formerly of Chelsea), died at Battle Creek, July 24, at the age of 90.

He was born in Stockbridge, Aug. 20, 1880, the son of David and Magdalena Haselschwerdt Rogers.

He married Florence Sears in 1903. She died in 1938.

Mr. Rogers worked for many years for the Richman-Backus Co. of Detroit. He later worked for the Gregory, Mayer & Tom Co. After leaving that company, he was self-employed as an office supplier until the time of his death.

He was a life member, and also the oldest living member, of Olive Lodge No. 156 F&AM of Chelsea. He had also served as grand master of the Lodge.

He is survived by two daughters, Mrs. Lee (Anne) Johnston of Battle Creek and Mrs. Theodore (Doris) Hart of Detroit; two sons, Claude S. Rogers of Ann Arbor and Paul D. Rogers of St. Louis, Mo. He is also survived by one brother, Chandler A. Rogers of Cavanaugh Lake. A son, Dean, died March 6, 1966.

Funeral services were held Monday, July 26, 2 p.m. at the St. Stefan Funeral Home with the Rev. Daniel Kellin officiating. Burial in Oak Grove Cemetery followed.

Louis V. Birch

Former Chelsea Resident Dies Wednesday Afternoon

Louis V. Birch of 4001 Junction, Detroit, formerly of Chelsea, died Wednesday afternoon, July 28 at age 48. He was born in Chelsea, Oct. 25, 1922, the son of William B. and Margaret Nell Birch, Sr.

Mr. Birch had been a Chelsea resident most of his life. He had operated Louie's Dairy Bar in Chelsea and at the time of his death was owner of the Junction Bar in Detroit. He was a veteran of World War II and the Korean conflict.

He was married to the former Patricia Culhane who survives.

He is also survived by his mother, Mrs. William B. Birch, Sr. of Chelsea; one son, Louis Birch, at home; three step-daughters, Kathy and Patricia Birch, of Detroit; one step-son, Steve Birch, of Detroit; two brothers, James B. Birch of Ann Arbor and William B. Birch, Jr. of Flint; two sisters, Mrs. Frank (Bernadine) Visely of Chelsea, and Mrs. Cecilia Neal of Dearborn; and three grandchildren. One sister, Mrs. Charles (Mary) Ritter, preceded him in death.

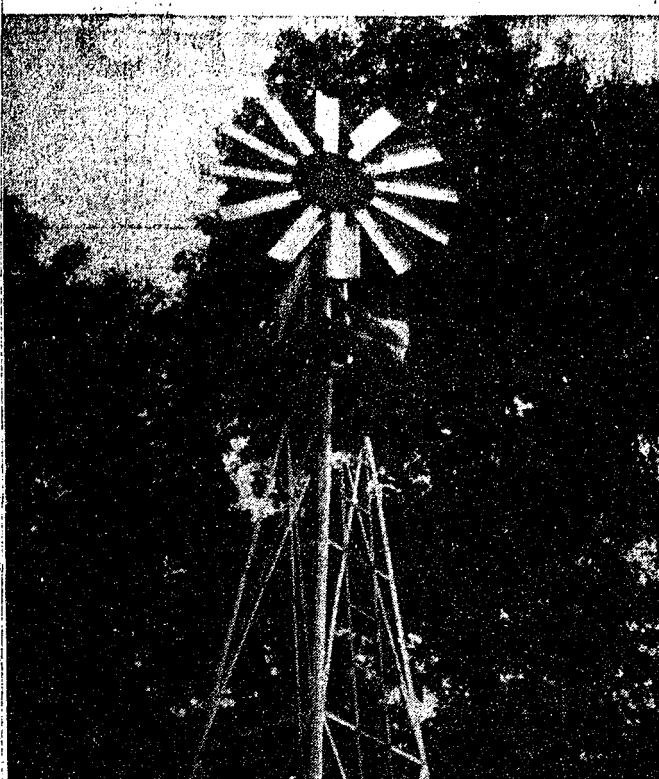
Staffan Funeral Home is in charge of funeral arrangements which are still incomplete.

BIRTHS

A son, Craig Lee, to Mr. and Mrs. Howard McCalla, Chelsea.

A daughter, Jennifer Cecilia, to Mr. and Mrs. Thomas Beller, Ypsilanti, July 24. Charles Ritter of Chelsea is Jennifer's maternal grandfather.

Cheese has protein of as high quality as meat as well as most of the other food values of milk. Use it often as a main dish. Cheese main dishes are good eating, good nutrition for your family and an aid to the food budget.



CHECKING THE BLADES on his hand-made windmill is Harold Moore, 13473 S. Moore Rd. Moore spent the winter completing the windmill, which is made of wood taken from large spools used for heavy wire cable. Having a liking for old things, Moore had tried to buy a functioning windmill for several months before deciding to build his own. He did succeed in finding the frame, which he repaired, shortened and painted before building the new platform at the top. The windmill is perfectly functional, but Moore finds the trees around his home offer too much protection from the wind during the summer. An inveterate tinkerer, Moore is a mechanic at Rumpy Chevrolet.

Summer Recreation Program

Morning Schedule*

9:00-11:30 a.m.—Arts and crafts at South school.
9:00-12:00 a.m.—Baton, high school.
9:00-11:30 a.m. MTWTH—Tennis, high school.
9:00-11:30 a.m. MWF—Little League, high school.
9:00-11:30 a.m. TTF—T-ball, high school.
9:00-12:00 a.m. Saturday—Track, high school.

*Meets every day, unless otherwise listed.

For grilled cheese puff sandwiches, combine 1 cup shredded Cheddar cheese (4 ounces), 2 tablespoons minced celery, 2 tablespoons well-drained pickle relish, 3 tablespoons mayonnaise, and dash of onion salt. In broiler toast 4 slices white bread one side. Spread cheese mixture on untoasted sides. Broil slowly until cheese melts, about 2 minutes. Makes 4 sandwiches.

For And About Teenagers



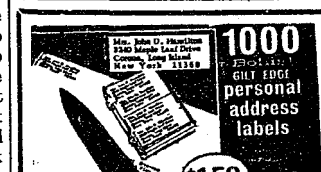
THE WEEK'S LETTER:

I live in a family of five. I'm fourteen, a girl, have a brother who is thirteen and an older sister. The problem is that my brother and I are always stuck with the work in the house and outside in the yard. The older sister doesn't do anything around the house. She was "thrown out" of school for being a pest and, to tell the truth, she still is a pest. She pesters me and my brother to death around the house about the work. If we don't do something for her, she goes into a tantrum. She does the same thing if the work we do doesn't suit her. Our folks say the work we do is alright, but she will still go into a tantrum. If we just look at her, she will go into a tantrum. What can we do? Our folks said we could get an outside opinion, but to use no names. Can you help?

OUR ANSWER: If things are as you picture them, you can help yourself. Ignore your sister's tantrums.

If she fails to attract attention, she might stop acting as if she were younger than you and your brother. If your parents have given her the responsibility to supervise what you do, they should let her approve the work, or take over that chore themselves.

If you have a teen-age problem you want to have discussed or an observation to make, address your letter to "For and About Teen-Agers," Community and Suburban Press Service, in care of this newspaper.



Now Available at
The Chelsea Standard

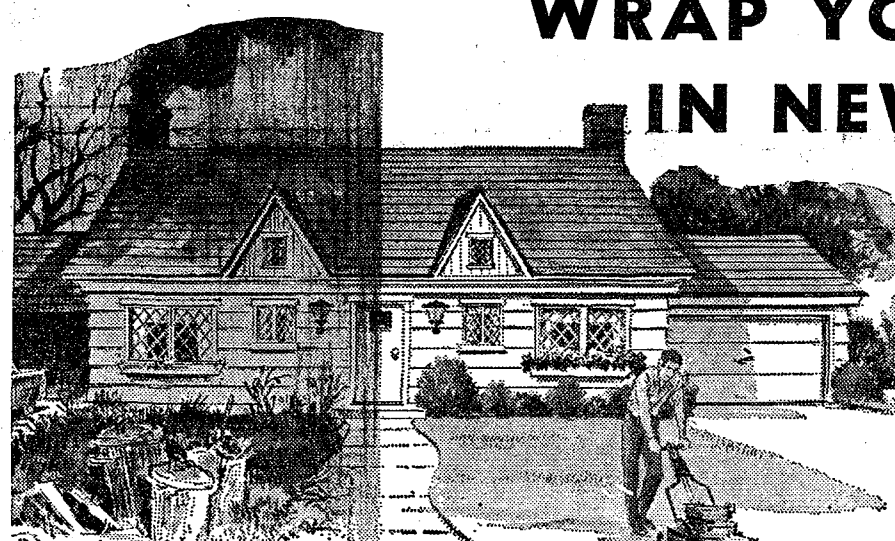
SUMMER SALE

SUITS — SPORT COATS
Up to 1/2 Off

STRIETER'S MEN'S WEAR

"The Place To Go for Brands You Know"

WRAP YOUR HOME IN NEW BEAUTY



- ★ PROTECT YOUR HOME INVESTMENT
- ★ SAVE ON FUEL DOLLARS AND MAINTENANCE
- ★ UPDATE WITHOUT CHANGING YOUR ADDRESS!

★ NEW — LIFETIME SIDING

VINYL-GLAD HORIZONTAL ALUMINUM WITH FACTORY-INSTALLED INSULATING BACKER

Won't chip, blister or peel. We carry all accessories for easy installation. White in stock, colors on order.

\$32.95 per square

ARMSTRONG'S Pre-Primed HARDBOARD

A modestly priced 10"-wide horizontal siding, ready for the final coat of paint. (Use a new acrylic and you won't repaint until you want to change color!) Installs like wood siding.

\$24.00 per square

COLORLOX X-90

A SUPER TOUGH PLASTIC FINISH Bonded to Masonite's famous hardboard siding base. Virtually maintenance free. Cuts and fits like wood! White in stock, colors on order.

\$39.50 per square

ROUGH-SAWN VERTICAL CEDAR FOR THE DEEP-TEXTURED NATURAL LOOK

10" wide, inverted batten design. Has a no-maintenance life of 100 years! or simply roll on a color-toned sealer.

\$30.00 per 100 sq. ft.

AND NOW — VINYL!

- ★ DESIGNED FOR HOMEOWNER INSTALLATION
- ★ STOCKED IN WHITE AT CHELSEA LUMBER

\$35.95 PER SQUARE

You'll Never Spend Another Dollar on Siding Upkeep!

Optional Drop-in Insulating Backer **\$7.15** sq.

— ALL AT YOUR HOME SUPPLY CENTER:

CHELSEA LUMBER CO.

DIAL THE LUMBER NUMBER, 475-3391

SPECIAL

thru Wednesday, Aug. 4, 1971

BRAZIER HOT DOG & LARGE SOFT DRINK

44¢

Some of fine Brazier Foods.

Dairy Queen

brazier

901 S. MAIN ST., CHELSEA PHONE 475-2677

YOU'RE MONEY AHEAD

WHEN YOU USE

SHERWIN-WILLIAMS HOUSE PAINT

America's standard of quality for 100 years



SHERWIN-WILLIAMS SWP OIL BASE HOUSE PAINT

Finest oil-base house paint you can buy. Tough, durable finish for extra years of beauty and protection. Wide choice of colors.



only \$7.49 Gal.

Regular colors in case lots of 4 gallons or more.

SHERWIN-WILLIAMS A-100 Latex HOUSE PAINT

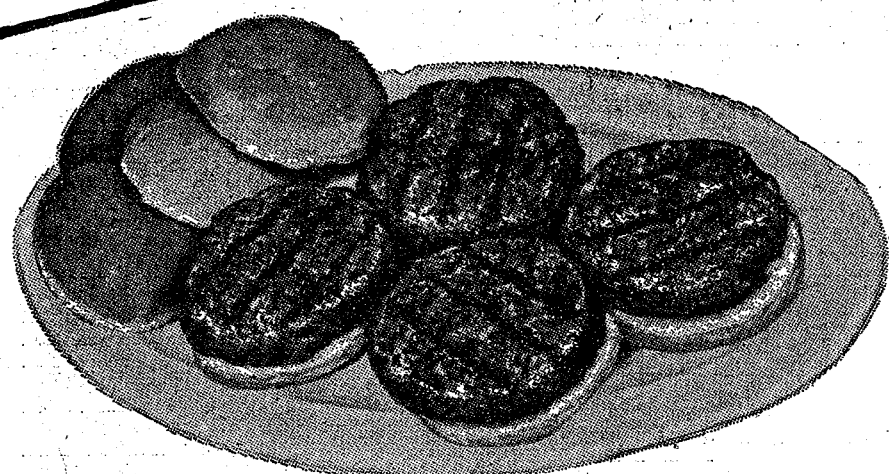
Tough, flexible finish for wood and masonry. Self-priming over previously painted surfaces in sound condition. Resists blistering and peeling. Dries lightning fast.

GAMIBLES

THE SUPERMARKET THAT'S JUST A LITTLE BIT BETTER

Stop & Shop

14901 Old U.S.-12
Corner at M-52
Chelsea



THE KNOW HOW OF INTELLIGENT MEAT BUYING IS REALLY 'KNOW WHERE'

Our customers have learned to depend on the outstanding quality of Stop & Shop meats — unfailing satisfaction with every cut they purchase. The finest quality, together with the experienced expertise of our meat cutting experts, makes an unbeatable combination!

Prices Effective Thursday, July 29, 1971,
through Sunday, August 1, 1971.

FRESH GROUND HAMBURGER

3 lbs.
or More

59^c lb.

Ground Fresh
Many Times
Daily!

- U.S.D.A. Choice Tender
Chuck Steaks ... Blade Cut **69^c lb.**
- U.S.D.A. Choice, Delicious
Chuck Steaks ... Round Bone **89^c lb.**
- Top Quality Eckrich
Smorgas Pae 1-Lb. Pkg. **99^c**
- Delicious Eckrich
Smok-y-Links ... 10^c Oz. Pkg. **69^c**

CUT FROM GRAIN-FED BEEF

U. S. Gov't Insp. TOP QUALITY
"Trimmed-Rite" U.S.D.A. Choice

BEEF CHUCK ROAST

Pot Cut **59^c lb.**

Tender, Juicy ... So Delicious

BEEF CHUCK ROAST

Round Bone Cut **79^c lb.**

- U.S.D.A. Choice, Boneless
Chuck Roast ... English Cut **89^c lb.**
- U.S.D.A. Choice Boneless
Chuck Roast ... Flat Cut **89^c lb.**
- Peschke's Skinless
Hot Dogs 14-Oz. Pkg. **59^c**
- Thin-Sliced Meadowdale
Sliced Bacon ... 1-Lb. Pkg. **59^c**

PIONEER PURE GRANULATED

SUGAR 5-Lb. Bag **49^c**

MEADOWDALE ASSORTED FLAVORS

POP ... 16-Oz. No-Return Bottles **8^c**

GERBER'S STRAINED

BABY FOODS
4 1/2-Oz. Jar **10^c**

SQUIRE

CHARCOAL BRIQUETS
20-Lb. Bag **99^c**

Courteous, Friendly Service

For Your Shopping Convenience ...

**OUR NEW
SUMMER HOURS**
Monday thru Saturday
9 a.m. to 9 p.m.
Sunday, 10 a.m. to 5 p.m.
Plenty of **FREE PARKING**

MCDONALD'S LOW FAT 2%

MILK
1 Gal. Crtn. **79^c**

CARNIVAL

**ICE CREAM
BARS**
12 pak **59^c**

**ICE COLD
BEER & WINE**

Farm Fresh Produce

Fresh Southern

PEACHES ... : . Lb. **15^c**

Fresh, Juicy California

NECTARINES ... Lb. **39^c**

Home-Grown

GREEN ONIONS . 2 Bunches **25^c**

New! Home-Grown

CABBAGE ... : . Lb. **8^c**

TREESWEET FRESH FROZEN

ORANGE JUICE
6-Oz. Can **15^c**

PEPSI-COLA
10-Oz. No-Return Bottles **8 pak 89^c**

MICHIGAN

POTATOES
10 lbs. **59^c**

GIANT SIZE

TIDE
LAUNDRY DETERGENT
49-Oz. Box **69^c**

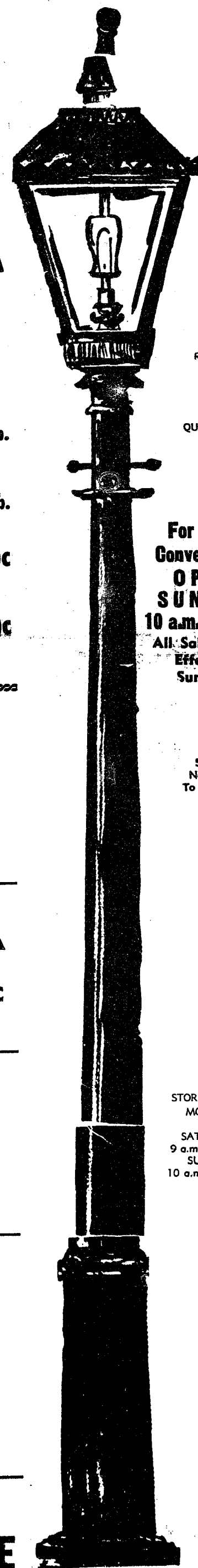
**Shop in a pleasantly cool
AIR-CONDITIONED STORE**

WE
RESERVE
THE
RIGHT
TO
LIMIT
QUANTITIES

**For Your
Convenience
OPEN
SUNDAY
10 a.m. - 5 p.m.
All Sale Prices
Effective
Sundays**

Sorry,
No Sales
To Dealers

STORE HOURS:
MONDAY
thru
SATURDAY
9 a.m. to 9 p.m.
SUNDAY
10 a.m. to 5 p.m.



Special Regulations Govern Movement of Extra-Wide Loads

Lansing—Special provisions governing the movement of 14-foot wide mobile homes and modular housing units on state highways have been announced by the State Highway Commission.

The regulations supplement restrictions and requirements spelled out in the new law raising the maximum width of units that may be transported on state highways from 12 feet, six inches, to 14 feet.

State Highway Director Henrik E. Stafseth said the first permits for the 14-foot-wide trailers would be issued starting Monday, July 26.

Federal law, Stafseth noted, prohibits movement of extra-wide units in Michigan's 949 miles of Interstate freeways. This will ban them from the Mackinac Bridge.

Movement also will be banned in two areas where the 12-foot-6 units now are prohibited. They are:

—In the Grand Rapids area on US-131 between M-11 (28th St.) and I-96 Freeway.

—In the Detroit area on M-39 (Southfield) Freeway and US-10 (John Lodge and James Couzens) Freeway within M-102 (Eight Mile Rd.) and M-29 on the north, US-24 (Telegraph Rd.) on the west and the Wayne-Monroe county line on the south. The 14-footers may be hauled into or out of, but not through, that area on other state highways.

Movement also will be prohibited on the following highways unless the extra-wide units have their origin or destination there:

US-12 from the Michigan-Indiana line east to US-23;

All of M-60, which runs from near Niles east to Jackson;

US-27 from I-94 Freeway north-east to Charlotte; and,

M-21 between Grand Rapids and Port Huron.

Other special provisions require that the extra-wide units:

—Be moved during periods of reduced traffic and not closer than 2,000 feet from each other.

—Pull off the highway to allow traffic to pass when excessive congestion develops.

—Be towed by a 1½ ton or larger truck equipped with dual wheels.

—Be moved only between the hours specified on the permit.

—Display six "clean, plain red flags" at least 16 inches square, one on each end of the front bumper of the towing vehicle and one on each corner of the mobile home or building module.

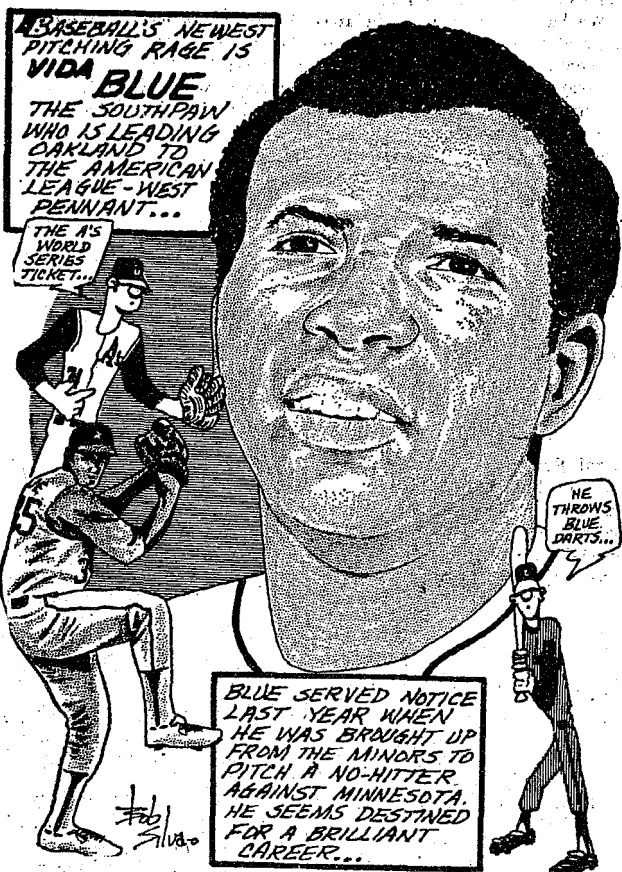
The flag regulation is in addition to those in the new law requiring use of flashing amber lights, warning signs serving notice of "oversize load" and escort vehicles when state police deem them necessary for highway safety. The law also bans the wide units from highways on holidays and weekends or when weather conditions make the unsafe.

Inverness Golf League

Standings as of July 25

| | Pts. |
|-------------------|------|
| Chelsea Milling | 45½ |
| J & S Tool Co. | 41 |
| G. A. Sales | 39½ |
| Seitz's Tavern | 39 |
| Central Fibre | 38½ |
| L. P. S. | 37½ |
| Lardas & Ahlstrom | 36 |
| Inverness Inn | 35½ |
| Meabon's | 33 |
| Chelsea Lanes | 32 |
| Chelsea Lumber | 31 |
| Schumm's | 29½ |
| The Keglers | 27½ |
| The Pub | 26½ |
| Dana Corp. | 25 |
| A. D. Mayer Ins. | 23½ |
| Dancer's | 23 |
| Fitzsimmon's Exc. | 22½ |

SPORTS CORNER



County 4-H Show Livestock Auction Will Be Held Aug. 5

Looking for quality meat? The 1971 Washtenaw county 4-H show may be your answer. A highlight of each year's show is the market livestock sale. This year's sale will feature 32 market steers, 73 market lambs, and 117 market hogs.

These animals have been a learning project for the 4-H owners. They have been given the utmost care and, of course, fed on balanced high quality feeds. They are offered for sale to the highest bidder.

How do you obtain one of these animals? Simply come to the sale Thursday, Aug. 5, look over the sale bill which gives the breed, weight, and owner, select several animals and make your bids. The price you bid will be per pound of live weight and will be slightly higher than the day's market price. The higher price is paid as an incentive to the 4-H youth to raise quality animals. Many of these youths will use this money to further their education.

After the sale is over, you may pay for your animal or make the necessary arrangements for billing. At that time you may also make arrangements to have the animal processed at one of the local plants. The processing cost will be in addition to the live price that you paid.

The animals will be trucked to the processing plant free of charge to you.

Sometime the next week, the processor will call and ask how you want the meat cut up and



MAUSOLEUMS ★ MONUMENTS
BRONZE TABLETS ★ MARKERS

BECKER MEMORIALS

6033 Jackson Road
ANN ARBOR, MICHIGAN

Most 'Wrong-Way' Accidents Involve Drinking Drivers

Lansing—Drinking drivers are involved in well over half of the "wrong-way" accidents on Michigan freeways.

Analysis of such accidents on the more than 1,400 miles of freeway in the five years from 1966 through 1970 showed that between 50 and 75 percent involved drivers who had been drinking.

A total of 219 wrong-way accidents were reported on state freeways from 1966 through 1970. They claimed 50 lives.

The worst in state history occurred July 17 when an auto and a station wagon rammed each other on I-75 Freeway near Grand Blanc, south of Flint. Nine persons were killed and one permanently injured.

A large portion of the accidents are caused by drivers who enter a freeway on an exit ramp. Others occur when vehicles cross a median or, rarely, when a car goes the wrong way on an entrance road to a freeway rest area.

Erection of median guard rail has helped prevent wrong-way crashes. However, no practical method has been developed to prevent vehicles from entering exit ramps. The main deterrents are warning devices.

On a standard interchange, two pairs of reflective black-and-white and red-and-white signs are installed on each side of the ramps. The first pair of 24-inch-wide signs warn the driver "Do Not Enter—Wrong Way." The second pair, 36 inches wide and placed farther down the ramps say "Wrong Way." In addition, red reflector buttons, known as delineators, are attached to a series of small metal standards running down both sides of the ramp to give the night driver additional warning.

A team of traffic engineers from the Department of State Highways has investigated the area of the I-75 accident near Grand Blanc. They will issue a report on their findings.

Records checked from 1967 thru 1970 showed no wrong-way fatalities on I-75 through all of Oak-

land county or in Genesee county as far north as M-121 Bristol Rd.). There were 14 accidents with 19 injuries. In most of the collisions, one or both of the drivers had been drinking.

The Highway Department made a detailed analysis of wrong-way crashes on Michigan freeways in 1966. The 44 accidents that year claimed three lives.

An analysis of 200 drivers apprehended driving in the wrong direction led to these conclusions.

—Slightly more than 50 percent of the drivers apprehended had been drinking.

—Fifty percent of the accidents were caused by drivers with 10 or more violations on their driving record. Only six of the accidents involved drivers with point-free records.

—Eighty percent of the accidents occurred after dark.

Following are records for subsequent years:

1967—19 accidents with 36 injuries and 10 fatalities. Sixty percent of the accidents involved drinking drivers.

1968—41 accidents with 43 injuries and 16 deaths. Seventy percent involved drinking.

1969—55 accidents with 66 injuries and nine deaths. Sixty-nine percent involved drinking.

1970—60 accidents with 66 injuries and 12 fatalities. Sixty percent involved drinking.

THE DIDGERIDOO

An Australian composer is writing a sextet for wind instruments and didgeridoo. The didgeridoo, a drone pipe made from a five-foot length of hollowed wood, is played by aborigines of Northern Australia.

The Fair Reporting Act became a Federal law April 25, 1971. This act required that consumer reporting agencies adopt procedures that will insure the consumer of accurate, confidential relevant and proper utilization of information concerning his credit rating.

SING-ALONG MUSIC at INVERNESS INN NORTH LAKE

Saturday Nights - 9:30 p.m. to 1:30 a.m.
Music by JIM ROMINE & GARY SCRIPTER

YOUR FAVORITE SANDWICHES
SHRIMP, CHICKEN & FISH DINNERS

The Chelsea Standard, Thursday, July 29, 1971

HITCHINGHAM ELECTRIC

PHONE (313) 475-1100
449 CHELSEA-DEXTER RD. CHELSEA, MICH.

RESIDENTIAL - COMMERCIAL - INDUSTRIAL
LIGHTING and POWER

Complete Line of
COMFORT-AIRE AIR CONDITIONERS

Check with us for prices before you buy.
ALL SIZES — IMMEDIATE INSTALLATION

We're going to give you
\$14,000,000.

Because our Exchange-insured Auto Club members are safer drivers, we have \$14,000,000 we expected to pay out in accident claims. But we didn't have to.

We're going to give it back.

So if your car is insured through the Exchange at Triple-A, we're going to see to it that you get your share. After September 1, 1971, you'll get a 10% refund when your present policy expires.

You see, when we say we want to do more for you, we mean it.



DETROIT AUTOMOBILE INTER-INSURANCE EXCHANGE
We want to do more for you.

RAY JOHNSTON

Phone 769-5000

1200 South Main St. Ann Arbor, Mich.

Drive out for delicious monthly SMORGASBORD

Saturday, July 31 - 5 to 7 p.m.

Adults - \$2.50 Children - \$1.00

NAPOLEON UNITED METHODIST CHURCH
NAPOLEON, MICH. - 10 Miles West of Manchester

EVENING SALE - HOUSEHOLD

AUCTION!

Having sold our home a public auction will be held, located ¾ mile south of Unadilla on Joslin Lake road to Joslin Lake Drive, west to house number 5401; or 4 miles southeast of Gregory on Unadilla road to Joslin Lake Drive, west to sale site.

4:30 p.m. **TUES., AUG. 3** 4:30 p.m.

Phone Stockbridge 517-851-8042 **PRICE BROTHERS AUCTIONEERS** Phone Stockbridge 517-851-8042

Household - Furniture - Some Antiques

Brown drop-leaf formica table and 2 chairs.
Oak drop-leaf table with formica top and 4 chairs.
Nauvayde green hide-a-bed.
Orange vinyl swivel chair.
Occasional 6-leg table.
Pole lamp.
Table lamps.
Round oak coffee table.
Large writing desk.
Hollywood bed frame, springs and mattress.
Spice mahogany double dresser and mirror.
Chest of drawers.
Antique dresser.
Bed springs and mattress.
Black Boston rocker.
Coffee table.
Bird cage.
Antique commode.

Picnic table and two benches.
Rollaway bed.
White enamel cook range.
1970 Magnavox astro-sonic combination stereo-radio with walnut cabinet.
G.E. 105 window air conditioner 4 months old.
Old kitchen cabinet.
20-qt. pressure cooker.
Fruit jars. 20-gallon crock.
Five aluminum screens.
Storm windows.
Samson massage reducing belt.
Quantity of dishes.
Cooking utensils.
Garden tools.
QUANTITY OF SMALL ITEMS TO BE SOLD
REMEMBER THE TIME—
EVENING SALE - 4:30 P.M.

TERMS: Cash or Check. Not Responsible for Accidents.

MRS. MIRIAM COPP
OWNER

BANK AUTO LOANS ARE BEST!

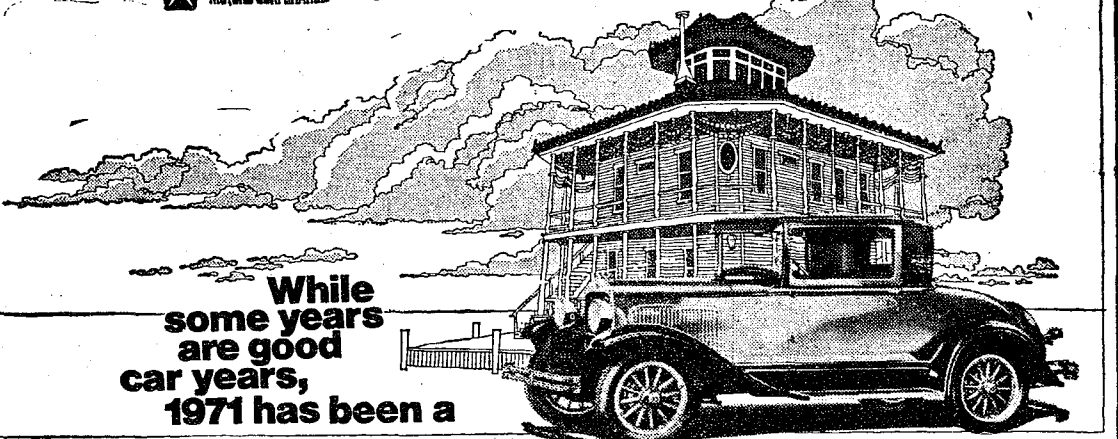


ANY TRIP YOU MAKE will be more pleasant, if the car you drive is financed the Bank Way—economically, conveniently and with local people!

CHELSEA STATE BANK

Member Federal Reserve System **FDIC** Member Federal Deposit Insurance Corp.

AUTHORIZED DEALERS **CHRYSLER** MOTORS CORPORATION



While some years are good car years, 1971 has been a

VINTAGE YEAR FOR PLYMOUTH SATELLITE

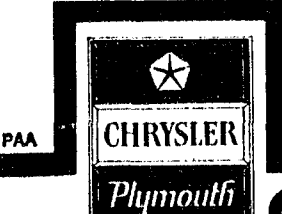
ONE OF OUR BEST YEARS. It takes something special to come up with a Vintage Year. But that's what '71 has been for Chrysler-Plymouth. Everything—from drawing board to final assembly—has come together in great fashion. We like to think our slogan "Coming Through" had a lot to do with it, because it's more than a phrase. It's a pledge, a dedication to one purpose: To come through for you with the kind of automobiles you want, not only in style, size and price—but also in quality you can live with for years to come. A good example is Plymouth Satellite.

DESIGN IS RIGHT-ON. Plymouth Satellite started out a new idea in intermediates, the only all-new intermediate for the year. The idea was that a 2-door and 4-door model should have different designs so that interior dimensions would not be compromised. The idea came across so well, Road Test Magazine voted it "U.S. Car of the Year."

NOW, A GREAT SELECTION COMING THROUGH FINAL CLEARANCE PRICED. While some years are good car years, '71 has been a Vintage Year for Chrysler-Plymouth. Quality shines and shows in every line. A drive in a Plymouth or Chrysler will prove how our '71 models have come through. Check out our great selection. We think you'll find that a quality car at a final clearance price is what "Coming Through" is all about. Forus, Foryou.



1971. It was a very good year.



Coming Through.

G. A. SALES & SERVICE · 1185 MANCHESTER ROAD



RECEIVING THE AWARD presented to Washtenaw county by the National Association of Counties (NACO) for its Vocational Residential Center program is Neil A. Mast, chairman of the County Board of Commissioners. Giving the award to Mast is Cleson Y. Chikasuye, president of NACO. Watching the award

presentation are, left to right, Robert Breault, federal aid co-ordinator for the county; K. Ross Childs, county administrator; Jay Bradbury, county commissioner; Probate Judge Francis L. O'Brien; O. Herbert Ellis, county commissioner; and Sylvester Leonard, county treasurer.

WANTED CEMENT & BLOCKWORK

All types—Poured walls, floors, drives and foundations.

CECIL CAUDILL
(517) 851-3847

Advertisement for Bids To Collect and Remove Garbage and Refuse in the Village of Chelsea, Michigan

Sealed proposals for the collection and removal of garbage and refuse will be received by the Village of Chelsea, Michigan, in the office of the Village Administrator, 104 East Middle Street, Chelsea, Michigan, until 12:00 noon, on Monday, August 16, 1971, and at that time and place will be publicly opened and read aloud.

The proposed work consists of collecting and removing garbage and refuse from residential dwellings in the Village of Chelsea, Michigan.

All bids shall be signed and submitted on blanks provided for this purpose, copies of which, along with specifications are on file at the office of the Village Administrator, 104 East Middle Street, Chelsea, Michigan. Bids shall be enclosed in a sealed envelope marked "Bid to Collect and Remove Garbage and Refuse in the Village of Chelsea, Michigan" and addressed to the Village Administrator, Chelsea, Michigan.

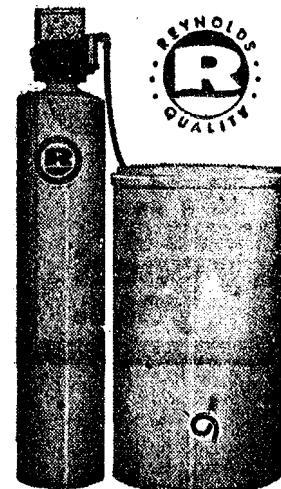
Each bid shall contain the name of every person, firm or corporation interested in the same, and must be accompanied by either a bid bond to the satisfaction of the Village of Chelsea or a certified check on a solvent bank, in the sum of 5% of the amount of the bid, made payable to the Village of Chelsea, Michigan, as a guarantee that if the bid is accepted, a contract will be entered into.

The Village of Chelsea, Michigan reserves the right to reject any or all bids and to waive any irregularities in bidding.

No bid may be withdrawn for at least forty-five (45) days after the actual date of the opening of the bids.

**BY ORDER OF THE COUNCIL OF
THE VILLAGE OF CHELSEA, MICHIGAN**
RICHARD HARVEY, CLERK

NOW YOU CAN RENT SOFT WATER The Carefree Way!



Now, for the first time, you can rent a famous, multi-purpose Heavy-duty REYNOLDS Fully-Automatic Water Conditioner that removes iron-rust the "CAREFREE" way.

New low rental rates:
Standard size only \$8.00 per mo.
Large size only \$10.00 per mo.
Rentals applied toward purchase, when desired
Investigate the very best in water conditioning... no obligation.

Serving Washtenaw County since 1931
REYNOLDS WATER CONDITIONING CO.
12100 Cloverdale Detroit, Michigan 48204
Michigan's oldest water conditioning company

Call our direct factory line without charge 1-800-562-7717

Van Cliburn Piano Competition Returns for 3-Part TV Series

East Lansing—The Van Cliburn International Piano Competition, the three-part WMSB production which won the 1971 Best Series Award given by the Central Educational Network, begins a return engagement at 7 p.m. Wednesday, Aug. 4, on WMSB (Channel 10) Michigan State University television.

Cristina Ortiz, the young Brazilian pianist who won the 1969 competition, opens the series performing works by Liszt, Chopin, and Albeniz.

Miss Ortiz, who at 21 is two years older than when she was awarded the \$10,000 first prize, made her Carnegie Hall debut in May of this year. Raymond Erikson of the New York Times said of that event, "Her youth was evident in her performances, but she is immensely gifted, and there is little doubt that she will have a successful career."

Miss Ortiz has studied at the International Academy in Paris with Magda Tagliaferro and at the Brazil Conservatory in Rio. She has taken additional work at the Curtis Institute of Music in Philadelphia with Rudolph Serkin.

As a soloist Miss Ortiz has appeared with orchestras in Brazil, France, Germany, Austria, Portugal, Fort Worth, Tex., Philadelphia, Pa., and the National Symphony in Washington, D. C., among others.

Other WMSB highlights include:

FANFARE
American Odyssey Fanfare's tribute to American folk songs, looks at the lives and music of the American miners at 10 p.m. Sunday, Aug. 1.

B. B. King, Jean Ritchie, Merle Travis, Billy Edd Wheeler, and Tom Paxton, artists who know the mines from first-hand experience, perform the somber ballads of the men who risk their lives deep in the earth.

Host Oscar Brand provides background information on the setting for the program, the mines in Eckley, Pa.

NET PLAYHOUSE
Distinguished British actress Dorothy Tutin portrays the tragic widow of England's Henry V whose love of a Welshman brought the ascendancy of the Tudor line as NET Playhouse presents "The Queen and the Welshman" at 11 p.m. Sunday, Aug. 1.

Catherine de Valois, daughter of France's King Charles VI, was married to Henry V as a means of cementing relations between France and England. Their marriage produced a son who ascended the throne as Henry VI upon his father's death. As play opens Catherine is being carefully restricted by the Duke of Gloucester, the lord protector, who hopes to prevent another marriage and the resulting confusion in the line of succession.

In spite of the Duke's efforts, Catherine meets and falls in love with Sir Owen Tudor. The story of their relationship and its consequences for them and England form the basis of the dramatization.

EVENING AT POPS

Julia Child, the French Chef, turns in her apron for an evening gown to join Arther Fiedler and the Boston Pops as the narrator of "Tubby the Tuba" at 12 noon Sunday, Aug. 1.

Evening At Pops will be rebroadcast at 11:30 a.m. Wednesday, Aug. 4.

REALITIES

Realities visits Mount Sinai, the point of historical convergence for three of the world's major religions, for a look at the region today at 4:30 p.m. Sunday, Aug. 1.

Sinai was the scene of God's revelation to Moses from a burning bush, Mohammed's ascension to heaven on a camel and St. Katherine's beheading. The sole monument remaining to any of these events is a tiny Greek Orthodox monastery housing seven monks and 3,000 icons.

St. Katherine's monastery was founded by Emperor Justinian in the sixth century at the site of St. Katherine's beheading two centuries earlier. It was built with the impregnability of a fortress to withstand attacks from the Arabs. Today, 1,400 years later, the monastery insures its safety by baking bread for its Arab neighbors.

THIRTY MINUTES WITH . . .
Popular newscaster David Brinkley gives his opinions on censorship and limitations of the media as Elizabeth's Drew's guest on Thirty Minutes With . . . at 1 p.m. Sunday, Aug. 1.

Brinkley, who has been a newscaster for 27 years, has won every major broadcasting award during the 14 years in which he shared an evening news program with Chet Huntley.

The Huntley-Brinkley team came into being during the 1956 presidential elections and later that year began delivering the day's news with Huntley in New York and Brinkley in Washington.

The program will be rebroadcast at 12:30 p.m. Monday, Aug. 2.

YES
WE ARE MAKING
LONG-TERM FARM
REAL ESTATE
LOANS

SEE US

**Federal
LAND BANK
Association**

P. O. Box 1006
Ph. 769-2411 3645 Jackson Rd.
Ann Arbor, Mich. 48103

Generation Gap U.S.A.



Need an apartment? Use a Standard Want Ad!

SUMMER SALE

DACRON - WOOL

Dress Slacks

Sizes 30 to 46

\$3.00 Off

STRIETER'S MEN'S WEAR

"The Place To Go for Brands You Know"

OPEN

For the Season

Tues. thru Sun.

11 a.m. to 10 p.m.

CLOSED MONDAYS

DELICIOUS FRIED CHICKEN

Individual Chicken Dinners

Includes cole slaw, french fries

BUCKET OF CHICKEN

ROOT BEER BY THE GALLON

ALSO: SANDWICH & FOUNTAIN MENU

L. & R. DRIVE-IN

North Territorial and Dexter Townhall Rd.

PHONE 426-8668

(Call ahead and your take-out order will be waiting)

here's
why
it pays
to deal
with the
savings
and loan
SPECIALISTS

Our primary business is savings and home loans. We have been doing these two things for eighty years, so we do them well. Because we have specialized, we have been able to refine our techniques to the point where we offer the broadest, most sophisticated savings and loan services available in Washtenaw County.

SAVINGS

We have consistently paid the highest rates on passbook savings, so your money builds faster at Ann Arbor "FED" than it does at banks. This can be especially significant when you have a long range savings program.

Too, we offer more savings opportunities; passbook savings, and hundreds of perpetual money savings plans. With the perpetual money savings plans, you can save lump sums of twenty, forty, fifty thousand dollars and in addition have monthly income for your lifetime and for your children thereafter during their lifetime. We have college education savings plans, retirement plans, home savings plans and at the "FED" you reach your savings goals sooner because your money earns more.

MORTGAGES

Because savings dollars go primarily into home loans at the "FED", we have more money available for mortgages. Ann Arbor "FED" is always the first place to go for a mortgage whether you're building or buying a home. We offer conventional loans, HUD (FHA) and VA home loans.

We also have HomeSav plans. You can buy your home and a ten, twenty or thirty thousand dollar savings nestegg at the same time. Ask our money managers about these plans when you are arranging your mortgage.

SAFETY

At the "FED" your capital is completely safe. It never shrinks as some investments do. It just grows and grows. Your savings account is insured to \$20,000 by the FSLIC and backed with solid local mortgages. We make it easy to save. You can make your deposits easily and safely by mail. Just send us the coupon below and we'll send you a supply of save-by-mailers and details on our save-by-mail program.

Name _____
Street _____
City _____
State _____ Zip _____
Send me details on your save-by-mail plan and how I can earn highest interest rates.

ANN ARBOR FEDERAL SAVINGS

the savings and loan specialists
Liberty at Division, West Stadium at Pauline,
Huron Parkway at Platt, Plymouth at Nixon.

AAFS

Member Federal Home Loan Bank System & Federal Savings and Loan Insurance Corporation

Jaycee Auxiliary Observes Birthday

The Chelsea Jaycee Auxiliary held its annual birthday meeting on July 20 with dinner at the Brown Hut in Jackson.

The Auxiliary was chartered with the Michigan Jaycee Auxiliary in August of 1956, and was formally organized July 17, 1956 by the Ann Arbor Jaycee Auxiliary.

Following the dinner a brief business meeting was held with president Sandy Brown directing. Those in attendance were Sandy Brown, Barb Updegraff, Judy Eubanks, Diane Loring, Shirley Greenleaf, Joan Rowe and Anne Steinaway.

TOOTHY WELCOME

Highly polished teeth from sperm whales, each fitted with an ornamental plated cord, long have figured prominently in welcoming ceremonies in Fiji, and it is against the law to remove one from the islands.

Senior Citizen Activities

Seventeen Senior Citizens met at the Korner House Tuesday, July 27.

Winifred Coffron extended an invitation to the Senior Citizens to visit the Methodist Home. The birthday party will be held there in September.

A card from the Chelsea Medical Center to Mrs. Zita Hafner and her committee was read, thanking them for the lab robes they donated.

Thursday, Aug. 5 Mrs. Bernice Schneider and Mrs. Inez Rank will hostess the social party.

Thursday Aug. 19 at 6:30 p.m. the committee for the birthday party, Mrs. August Dorer, Mrs. Marie Shaver, Mrs. Vern List, and Mrs. Bernice Schneider, will meet. Every Friday at 7:30 p.m. is fun night at the Korner House. A woman was been engaged to clean the house.

Club and Social Activities

LIMA CENTER EXTENSION

Lima Center Extension Study Group held a picnic, "white elephant" sale and election of officers Wednesday, July 14 at Fisher's Grove. Last year's slate of officers was re-elected for another year.

There will be no August or September regular meeting. Members are urged to plan to attend the county's fall rally in Dexter in September. Details will follow later.

SATTERTHWAITE REUNION

A Satterthwaite family reunion was held July 25 at the home of Vernon Satterthwaite, 14675 Jerusalem Rd. There were 68 relatives in attendance, representing four generations. Plans for another reunion to be held next year were made.

During the reunion Mrs. Jerry Satterthwaite began work on a family genealogy which will trace the family back to its origins in England.

+ Services in Our Churches +

ST. PAUL UNITED CHURCH OF CHRIST
The Rev. Warner Siebert, Pastor.
Sunday, Aug. 1—
9:00 a.m.—Family worship. Sermon title: "Life begins at Eighty." Koch baptism.

9:20 a.m.—Church school.
Monday, Aug. 2—
8:15 p.m.—Baseball game.

OUR SAVIOR LUTHERAN CHURCH
Rebekah Hall, 1194 M-52
The Rev. William H. Keller, Pastor.
Every Sunday—
9:00 a.m.—Worship service.

NORTH SHARON COMMUNITY BIBLE CHURCH
Sylvan and Washburn Rds.
The Rev. William Enslin, Pastor.
Every Sunday—
10:00 a.m.—Sunday school.
11:00 a.m.—Worship service.
6:30 p.m.—Young People's service.

Every Wednesday—
7:30 p.m.—Prayer meeting.

ZION LUTHERAN CHURCH
Corner of Fletcher, Waters Rds. (Rogers Corners)
The Rev. John R. Morris, Pastor.
Every Sunday—
8:30 a.m.—Sunday school.
9:30 a.m.—Worship.

CHELSEA BAPTIST CHURCH
337 Wilkinson
The Rev. James Stacey, Pastor.
Every Sunday—
10:00 a.m.—Sunday school.
11:00 a.m.—Worship service.
Nursery care available during all services.

6:00 p.m.—Junior and Senior Baptist Youth Fellowship.
7:00 p.m.—Evening worship.
Every Wednesday—
7:30 p.m.—Bible study and prayer meeting.

FIRST ASSEMBLY OF GOD CHURCH
The Rev. Thode B. Thodeson, Pastor.
Every Sunday—
9:45 a.m.—Sunday school.
11:00 a.m.—Worship service.
7:00 p.m.—Evangelistic service.
Every Wednesday—
7:00 p.m.—Midweek services.

CONGREGATIONAL CHURCH (United Church of Christ)
The Rev. Daniel Kelin, Pastor.
Every Sunday—
10:00 a.m.—Church school.
10:00 a.m.—Morning worship.

ST. BARNABAS EPISCOPAL CHURCH
20500 Old US-12
The Rev. C. Walton Fitch, Vicar.
Telephone 426-8815
Every Sunday—
9:15 a.m.—Holy Communion, first, third, and fifth Sundays.
9:15 a.m.—Morning Prayer, second and fourth Sundays.

FIRST CHURCH OF CHRIST, SCIENTIST
883 Washtenaw Ave., Ann Arbor
Sunday, Aug. 1—
10:30 a.m.—Sunday school.
10:30 a.m.—Morning service.
Lesson-sermon: "Love."

GREGORY BAPTIST CHURCH
The Rev. Grant Lapham, Pastor.
Every Sunday—
10:00 a.m.—Worship service.
11:15 a.m.—Church school.
6:30 p.m.—Baptist Youth Fellowship.

7:30 p.m.—Evening worship service.

SALEM GROVE UNITED METHODIST CHURCH
The Rev. Harry Weeks, Pastor.
Every Sunday—
10:00 a.m.—Sunday school.
11:00 a.m.—Worship service.

ST. JOHN'S EVANGELICAL AND REFORMED CHURCH (United Church of Christ)
Francisco
The Rev. Robert Townley
Every Sunday—
10:00 a.m.—Worship service.
10:20 a.m.—Sunday school.

CHURCH OF CHRIST
13661 Old US-12, East
Lionel S. Burger, Minister.
Every Sunday—
10:00 a.m.—Church school.
11:00 a.m.—Worship service.
6:00 p.m.—Worship service.
Every Wednesday—
7:30 p.m.—Bible Study.

BETHEL EVANGELICAL AND REFORMED CHURCH (United Church of Christ)
Freedom Township
The Rev. Roman A. Reineck
Every Sunday—
10:00 a.m.—Worship.
10:00 a.m.—Sunday school.

FIRST UNITED METHODIST CHURCH OF WATERLOO
Parks and Territorial Rds.
Mrs. Altha Barnes, Pastor.
Every Sunday—
9:15 a.m.—Morning worship.
10:15 a.m.—Sunday school.

ST. JOHN'S EVANGELICAL AND REFORMED CHURCH (United Church of Christ)
Rogers Corners
The Rev. David J. Kleis
Every Sunday—
9:30 a.m.—Sunday school.
10:30 a.m.—Morning worship.

OLD BUSINESS

Virtually all peoples of ancient Europe are known to have produced and eaten sausage of some type. By the Middle Ages sausage-making had become an art practiced commercially in many localities.

If you have high blood pressure—and it is one of the most common ailments in America—stay slim, try not to worry and quit smoking, says the Michigan Heart Association. Worry and smoking are especially bad to raise blood pressure, says the Association.

Headquarters for Accutron® by Bulova

The heart of an Accutron watch is a tiny, electronically-powered tuning fork that splits a second into 360 equal parts. This split-second timing is so precise that Bulova guarantees accuracy to within a minute a month.* See our full selection of Accutron watches. From \$110.

WINANS JEWELRY

*We will adjust to this tolerance, if necessary. Guarantee is for one year.

ST. MARY CATHOLIC CHURCH
The Rev. F. Francis Wahowiak
Every Saturday—
7:30 p.m.—Mass.
Every Sunday—
Masses at 6:30 a.m., 8:00 a.m., 10:00 a.m., and 11:30 a.m.

IMMANUEL BIBLE CHURCH
145 E. Summit St.
Gayle DeSmyther, Lay Leader.
Every Sunday—
9:45 a.m.—Sunday school, nursery provided.
11:00 a.m.—Morning worship, nursery provided.
7:00 p.m.—Evening service.

Every Wednesday—
Family hour, prayer meeting and Bible study.

NORTH LAKE UNITED METHODIST CHURCH
The Rev. Harry Weeks, Pastor.
Every Sunday—
9:30 a.m.—Worship service.
10:30 a.m.—Sunday school.

FIRST UNITED METHODIST CHURCH
The Rev. Clive Dickins, Pastor.
Sunday, Aug. 1—
10:00 a.m.—Church service.

ST. THOMAS EVANGELICAL LUTHERAN
The Rev. Daniel L. Mattson, Pastor.
Sunday, Aug. 1—
9:15 a.m.—Sunday school.
10:30 a.m.—Worship service.

ST. JACOB EVANGELICAL LUTHERAN CHURCH
12501 Riethmiller Rd., Grass Lake
The Rev. Andrew Bloom, Pastor.
Every Sunday—
9:00 a.m.—Sunday school.
10:15 a.m.—Divine services.

METHODIST HOME CHAPEL
The Rev. R. L. Clemans, Chaplain.
Every Sunday—
8:45 a.m.—Worship service.

VILLAGE UNITED METHODIST CHURCH OF WATERLOO
8117 Washington St.
Mrs. Altha Barnes, pastor.
Every Sunday—
10:00 a.m.—Sunday school.
11:15 a.m.—Morning worship.

CHELSEA MEDICAL CENTER
Every Wednesday—
1:30 p.m.—Worship service.

FIRST UNITED PRESBYTERIAN CHURCH
Unadilla
The Rev. T. H. Liang
Every Sunday—
9:45 a.m.—Sunday school.
11:00 a.m.—Worship service.
Every Tuesday—
8:00 p.m.—Choir practice.

VILLAGE BEAUTY SALON

LORETTA PANNONE, Owner-Operator
CINDY - EULA - MARGE - ARLENE
107 N. MAIN PHONE 475-5421

OPEN MONDAY THRU SATURDAY

Evenings, Wednesday and Thursday

BETTER HURRY!



LAST
3 DAYS
FURNITURE
SALE

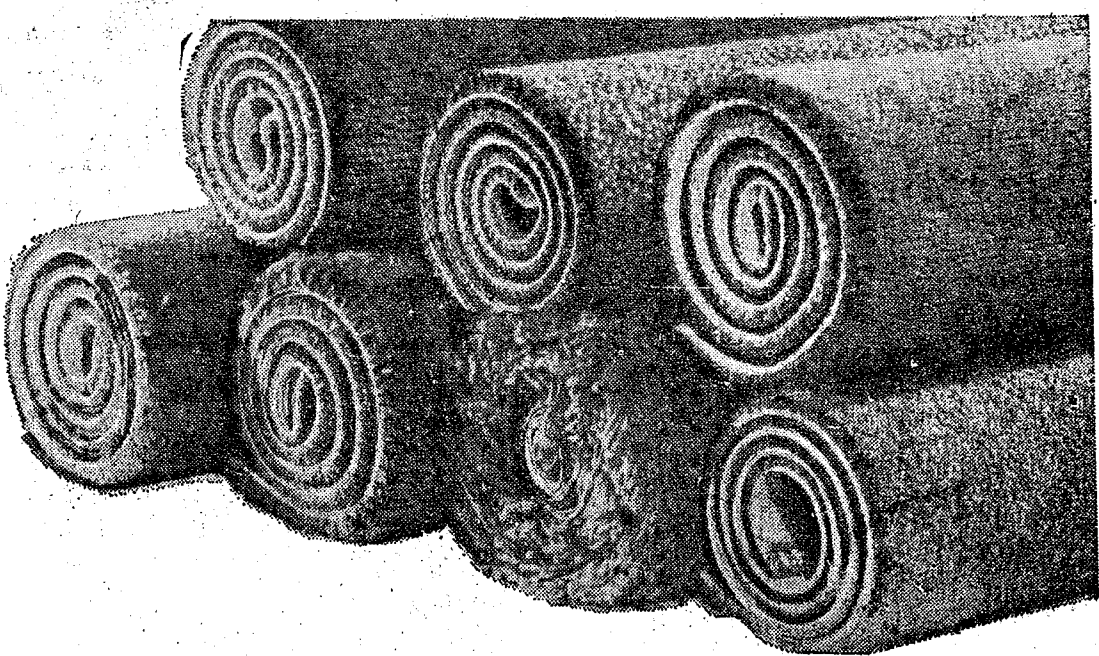
- ★ ALL STOCK FURNITURE REDUCED 10% to 50%
- ★ SINCLAIR CUSTOM DRAPERIES REDUCED 20%
- ★ SPECIAL ORDERS LESS 10%

Merkel

BEAUTIFUL HOME FURNISHINGS

Open Monday and Friday Until 9 Phone Chelsea 475-8621

ANNUAL JULY CARPET CLEARANCE SALE - LAST 3 DAYS SALE ENDS SATURDAY, JULY 31



15% OFF

Greater savings on remnants and some stock merchandise.

on all carpets from our leading manufacturers . . . Lees, Wunda Weve, CabinCraft, Magee, Mohawk and others.

Choose from shags, twists, plushes, sculptured, random shears, loop pile, commercial, kitchen, outdoor textures and many others in hundreds of colors. Piles include nylon, polyester, acrylic and wool.

Only semi-annually do we offer this reduction on all our fabrics. Bring your measurements for a quick estimate.

(Prices do not apply only where manufacturer's policy strictly prohibits.)

Open Friday and Monday Evenings Until 9.

FREE ESTIMATES - TERMS AND BANK CONTRACTS
Call 475-8621 for in-home service.

Merkel's

BEAUTIFUL HOME FURNISHINGS

Michigan Festivals and Events

AUG. 1-8

KALKASKA COUNTY CENTENNIAL
KALKASKA, AUG. 1-7

COAST GUARD FESTIVAL
GRAND HAVEN, AUG. 2-8

NATIONAL ONE DESIGN WORLD'S REGATTA, TAWAS CITY, AUG. 6-8

GLADIOLUS FESTIVAL
COLOMA, AUG. 6-8

FINN FAIR
HANCOCK, AUG. 6-8

SQUARE DANCE
HELL, AUG. 7

OUTDOOR FINE ARTS AND CRAFTS SHOW, HOLLAND, AUG. 7

OUTDOOR ART FAIR
FREMONT, AUG. 7

INDIAN POW-WOW
HASTINGS, AUG. 7-8

WATERFRONT ARTS AND CRAFTS EXHIBIT, TAWAS CITY, AUG. 7-8

DICKINSON COUNTY FESTIVAL OF THE ARTS, IRON MOUNTAIN, AUG. 7-14

PERE MARQUETTE CANOE RACE
LUDINGTON, AUG. 8

INDIAN POW-WOW
CROSS VILLAGE, AUG. 8

IONIA FREE FAIR
IONIA, THROUGH AUG. 8

ROGERS CITY CENTENNIAL
ROGERS CITY, THROUGH AUG. 8

ATTRACTIVE REST STOPS ARE LOCATED AT INTERVALS ALONG MICHIGAN'S HIGHWAY SYSTEM. TAKE A BREAK ABOUT EVERY TWO HOURS TO WASH UP, RELAX AND EXERCISE.

Bring 'em back ALIVE!

DRAWN FOR ASA BY S. LEE BOWERS

Early August Events Plentiful In Michigan for Vacationers

A wide variety of fun-filled summer events, ranging from a fine arts festival at Holland to a square dance in Hell, awaits vacationers and week-end travelers across Michigan in early August, according to Automobile Club of Michigan.

Auto Club's eighth in a series of 14 maps of festivals and special events in Michigan this summer lists 15 occasions for family fun.

One event, the National One Design World's Regatta, at Tawas City, was cancelled because of last-minute repairs required at the area's docks, damaged by last winter's ice and further weakened by this season's high water.

At Grand Haven, by act of Congress, the 101st birthday of the U.S. Coast Guard will be held Monday, Aug. 2 through Sunday, Aug. 8. This event, which draws a quarter-million persons each year includes an outdoor memorial service, a festival of bands, a giant parade, water thrill show and fireworks. The U.S. Coast Guard Cutters Mackinaw and Woodbine will be on hand for public inspection.

Indian Pow-wows at Cross Village (Aug. 8) and Hastings (Aug. 7-8) will display Michigan's rich Indian heritage. Visitors will see Indians in full regalia—both young people and adults—in dance competition and special events. A wide variety of Indian goods will be available and printed explanations of the dances performed and what they signify will be distributed.

At Ionia, the state's largest free fair (and one of the top 25 fairs in the U.S.) starts July 30 and continues through Sunday, Aug. 8. More than a half million persons attend this event each year to enjoy 10 days of fun and entertainment. A country western show, harness racing, stock car races, and a demolition derby are offered with a show headed by stars Sonny and Cher.

At Holland, the second annual Outdoor Fine Arts and Crafts Show is Saturday, Aug. 7. Work of exhibitors (no age restrictions)

will be displayed. Entries are welcomed and may be registered as late as the day of the show, which will be held in Holland's picturesque Centennial Park.

The 10th annual Square Dance in Hell will be held in this South central community, 20 miles west of US-23 on M-46, on Saturday, Aug. 7. Some 500 persons are expected, with country western music and lots of fun. The winner of "Drugs Is Hell" contest will be announced that evening. Entries have poured in from all over the U.S.

Other events which will attract Michiganders the first week in August are: the Kalkaska County Centennial, Aug. 1-7; the Gladiolus Festival at Coloma, Aug. 6-8; the Finn Fair at Hancock, in the Upper Peninsula, Aug. 6-8; the Outdoor Art Fair at Fremont, Sunday, Aug. 7; the Waterfront Arts and Crafts Exhibit at Tawas City, Aug. 7-8; the Dickinson County Festival of the Arts, Iron Mountain, Aug. 7-14; the Pere Marquette Canoe Race at Ludington on Aug. 8 and the Rogers City Centennial, July 30 through Aug. 8.

HIGH BLOOD PRESSURE
High blood pressure is the most important single factor in bringing on stroke, and this is one of the best reasons in the world to get medical treatment for high blood pressure, says the Michigan Heart Association, a Michigan United Fund agency.

Baseball Team Loses, 3-1, to Baskin Robbins

Chelsea lost last Thursday night to Baskin Robbins by a score of 3-1 in the Ann Arbor recreation baseball league.

Baskin Robbins scored two runs in the third inning on a walk, a hit and a two-base throwing error.

Chelsea came back in the bottom of the third as Dave Lukasak cracked a home run over the right field fence.

Baskin Robbins added their final run in the sixth inning on an error for Chelsea was Ron Sweeney. Randy Brier was catcher. For Baskin Robbins, Roger Cash pitched, and Al Grater was catcher.

Chelsea had two fine double plays but unfortunately they were not enough.

Line Score: R H E
Chelsea 1 2 3
Baskin Robbins 3 1

4-H Clubs

LIMA - SCIO COOKS
Lima-Scio 4-H Cooks held demonstration meal, a picnic for their mothers, July 26 at Coy's Lake. On the menu were foods which the girls will be using for exhibits at the Washtenaw County 4-H Fair which begins Aug. 3.

A compliment will make more friends for you than the truth.

Four CHS Students Attending Wrestling Clinic at Olivet College

Four high school students from Chelsea are among the 150 participants in the first session of the ninth annual Spartan Wrestling Clinic at Olivet College this week.

Those attending are Larry E. Jones, 6051 Sibley Rd.; Mike J. Spence, 128 Summit St.; Tom I. Hubert, 803 W. Middle St.; and Jon T. Marzek, 1137 Freer Rd.

Directing the clinic is Grady Peninger, head wrestling coach at Michigan State University. Olympic Gold Medal winner Doug Blumhugh and Don Behm, the 1972 choice for the gold medal, are also on the staff.

We Americans are entirely too careless and we pay for it with human lives.

Servicemen's Corner

Manchester Girl Completes Basic Course At WAC Center

Ft. McClellan, Ala.—Private Ruth A. Postiff, daughter of Mr. and Mrs. Allen L. Postiff, 8234 Schneider Rd., Route 3, Manchester, Mich., recently completed eight weeks of basic training at the Women's Army Corps Center, Ft. McClellan, Ala.

She received instruction in army history and traditions, administrative procedures, military justice, first aid and field training.

A system of checks and balances is all right if you have the balances for the checks.

SUMMER SALE
ALL STYLES
MEN'S SHOES
1/2 OFF
STRIETER'S MEN'S WEAR
"The Place To Go for Brands You Know"



New Fun Game, Easy To Play... All Can Learn!

Try billiards for an evening's fun. It's new... exciting... easy to learn... the whole family can play together... great fun, and so inexpensive!

CHELSEA LANES

1180 M-52 Phone GR 5-8141

Need an apartment? Use a Standard Want Ad!

TOP VALUES IN REFRIGERATORS—WASHERS—DRYERS—RANGES—DISHWASHERS—TV—STEREO—AIR CONDITIONERS! Compare!

GENERAL ELECTRIC

BEST BUYS



TBF-15SM

Big freezer section... no defrosting ever!

14.7 cu.ft. No Frost Refrigerator

- Freezer holds up to 148 lbs.
- Two Ice 'n Easy trays.
- Freezer door shelves for half gallon ice cream cartons, 11 juice cans.
- Four cabinet shelves, one slides out.
- Twin vegetable bins hold 2/3 bushel.
- Removable bin holds up to 18 eggs.
- Coil-free back for neat, flush fit.
- Separate temperature controls.
- Only 30 1/2" wide, 64" high.
- GE colors or white.

ONLY
\$299⁹⁵ w/t

HEYDLAUFF'S

112 N. Main St., Chelsea

(Formerly Frigid Products)

Phone GR 9-6651

CHELSEA FINANCE CORP.
\$25 to \$1,000
For Any
Worthwhile Purpose

See or Call
FRANK HILL
at 475-8631

111 PARK STREET
CHELSEA, MICH.

HOUSE PAINT SALE

PITTSBURGH HOUSE PAINT
\$7.13 per gal. (Except Trim Paint)

ROYAL BOND—The Budget Paint
\$2.99 per gal. (Interior or exterior)

CHELSEA HARDWARE
110 S. Main St. Phone GR 9-6311